

Westwood - Stage 9

# Fencing Manual.



You're home.

Faringdon  
Rolleston



# Introduction

Westwood Faringdon will include a range of landscape features supplied by the Developer. These will include walls, privacy fencing, gates and planting.

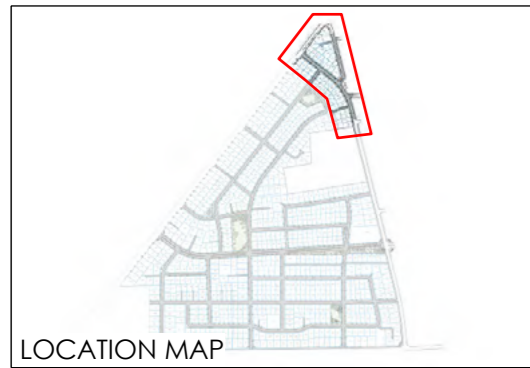
This Fencing Manual has been provided to clearly show the landscape features that will be provided on each lot within Westwood, Faringdon.

Please refer to the Faringdon Construction Manual for further information on fencing options not supplied by the Developer.

# Contents

Stage 9 Masterplan - Lot Boundary Fencing	3
Goulds & East Maddisons Road - Entrance	5
Goulds Road - Lot Boundary Treatment	7
Typical Corner Section Plan	9

The fencing and landscape features set out in this manual reflect Hughes Development’s intentions regarding developer constructed fencing as at the date of publication. Hughes Developments may make such variations, amendments and additions to this manual as are required by any territorial or statutory authority, or which (in the opinion of Hughes Developments) will enhance the visual appeal of the Faringdon subdivision.



LEGEND

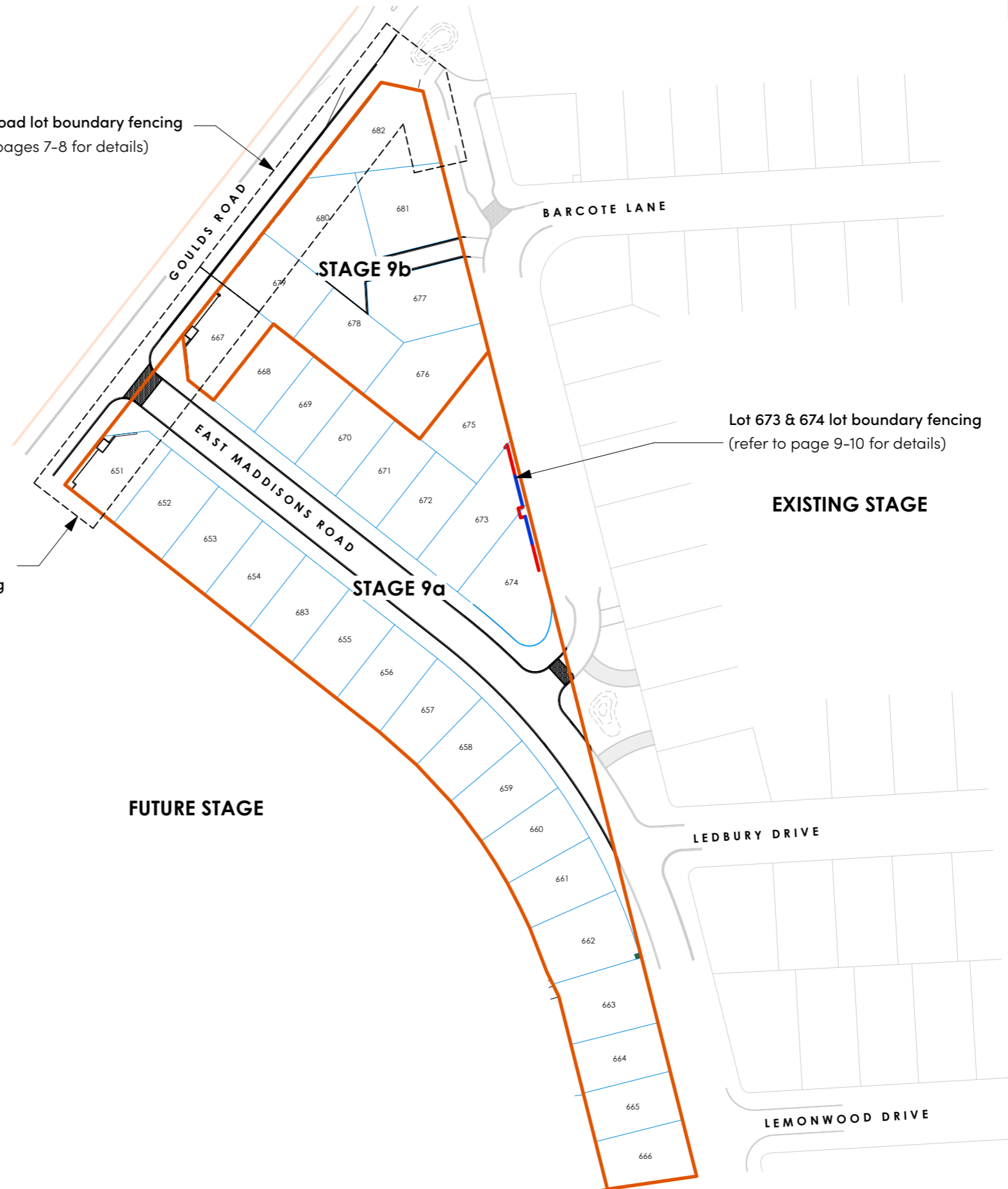
- LOT BOUNDARIES
- STAGE BOUNDARY
- 1.8M COLOUR PANEL FENCE
- 1.8M HIGH POOL STYLE FENCE
- POWER KIOSK

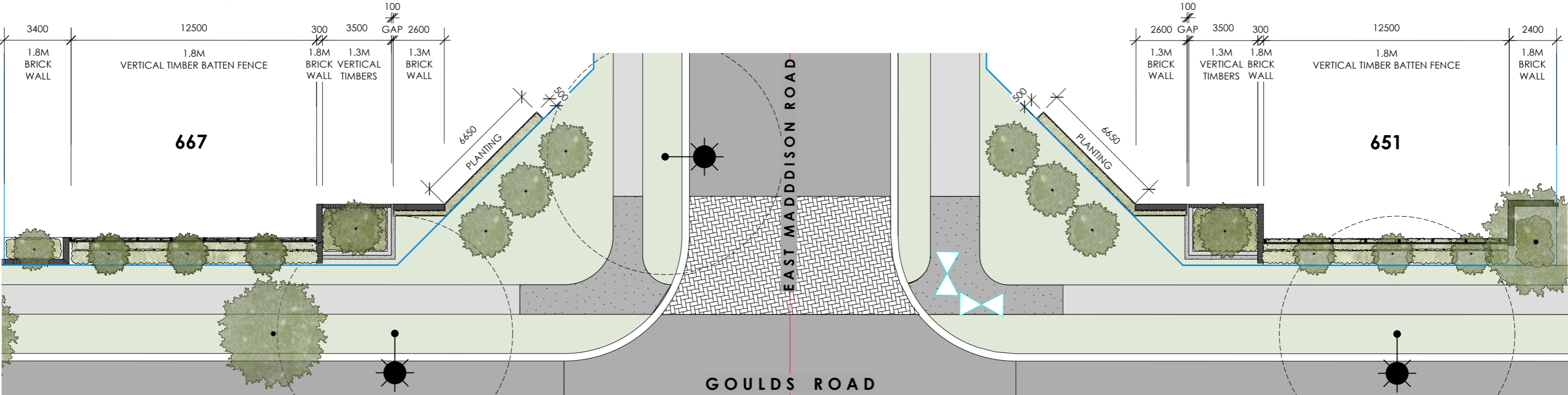
Note: For fencing to corner Lots refer to pages 9–10

Goulds Road and East Maddisons Road entrance intersection fencing  
(refer to page 3–4 for details)

Goulds Road lot boundary fencing  
(refer to pages 7–8 for details)

Lot 673 & 674 lot boundary fencing  
(refer to page 9–10 for details)



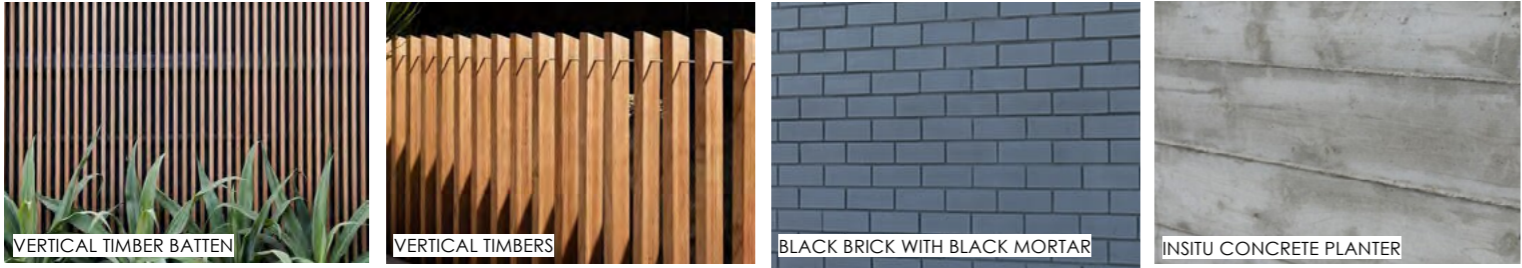


GOULDS ROAD - EAST MADDISONS ROAD : SECTION ELEVATION 1:200

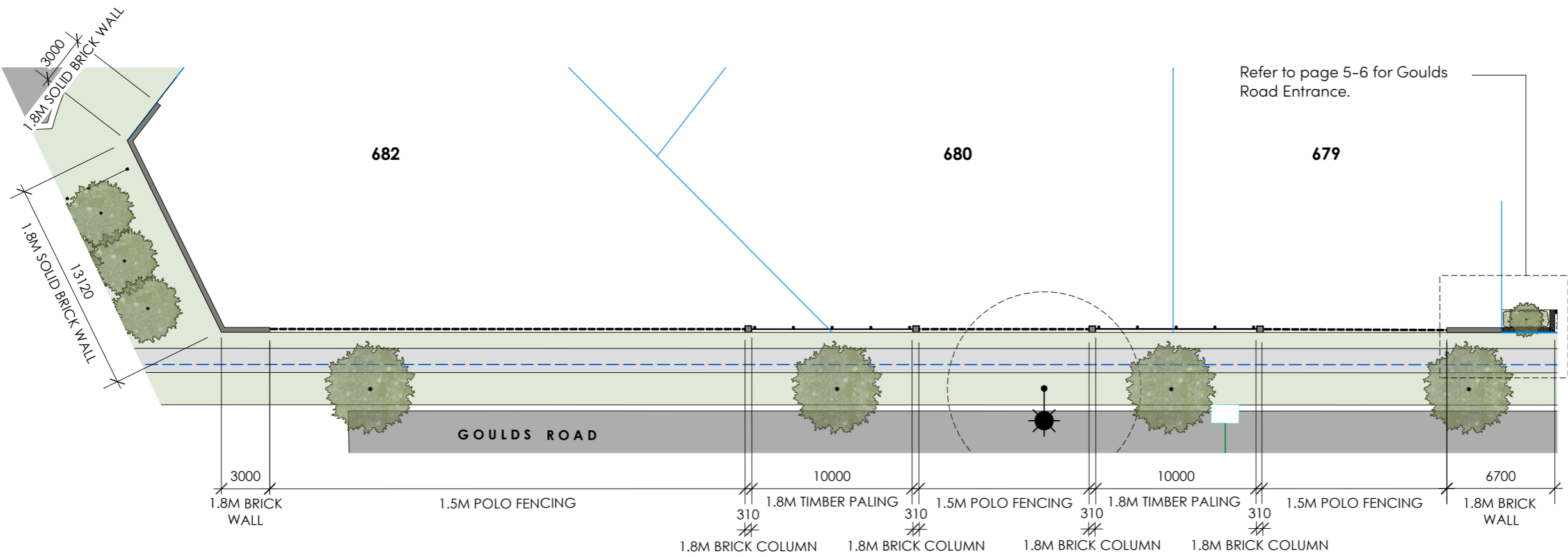
The below entrance to East Maddisons Raod from Goulds Road consists of 1.8m & 1.3m high brick walls and a 400mm high insitu concrete planter with vertical dressed purple heart timbers fins. A mixture of low planting and specimen trees sit within the planter to highlight the entrance. Small specimen trees, hedging and low planting sit in front of the section of timber batten fencing that is set back off the boundary. Note all structures sit within the private lot.



MATERIAL PALETTE



NOTE: All fencing sits within the Private lot boundary.

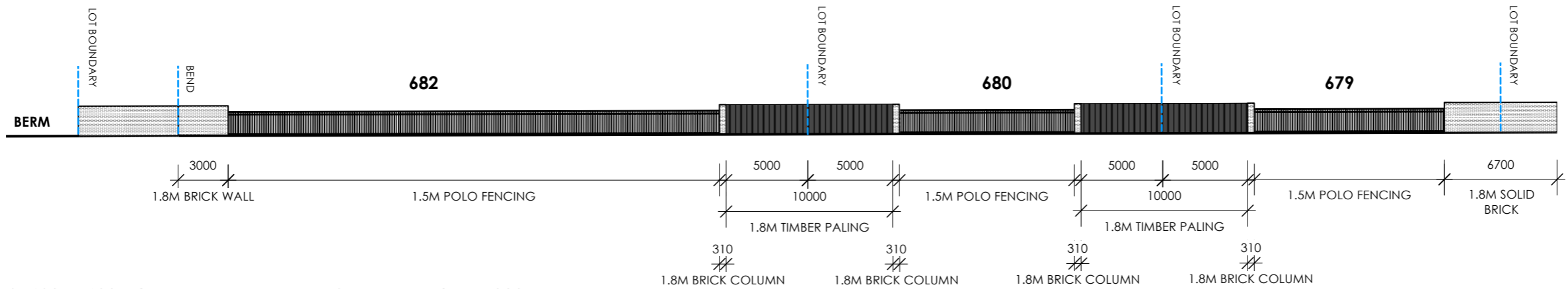


LOT 679, 680 & 682 BOUNDARY TREATMENTS - PLAN 1:300

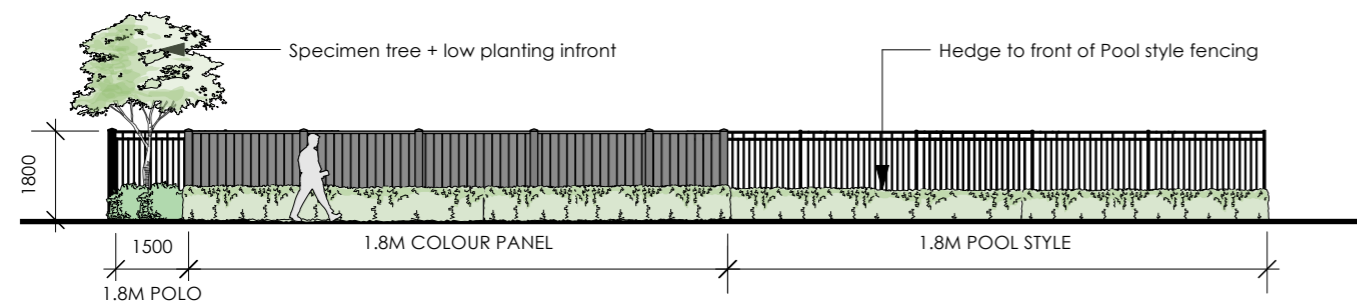
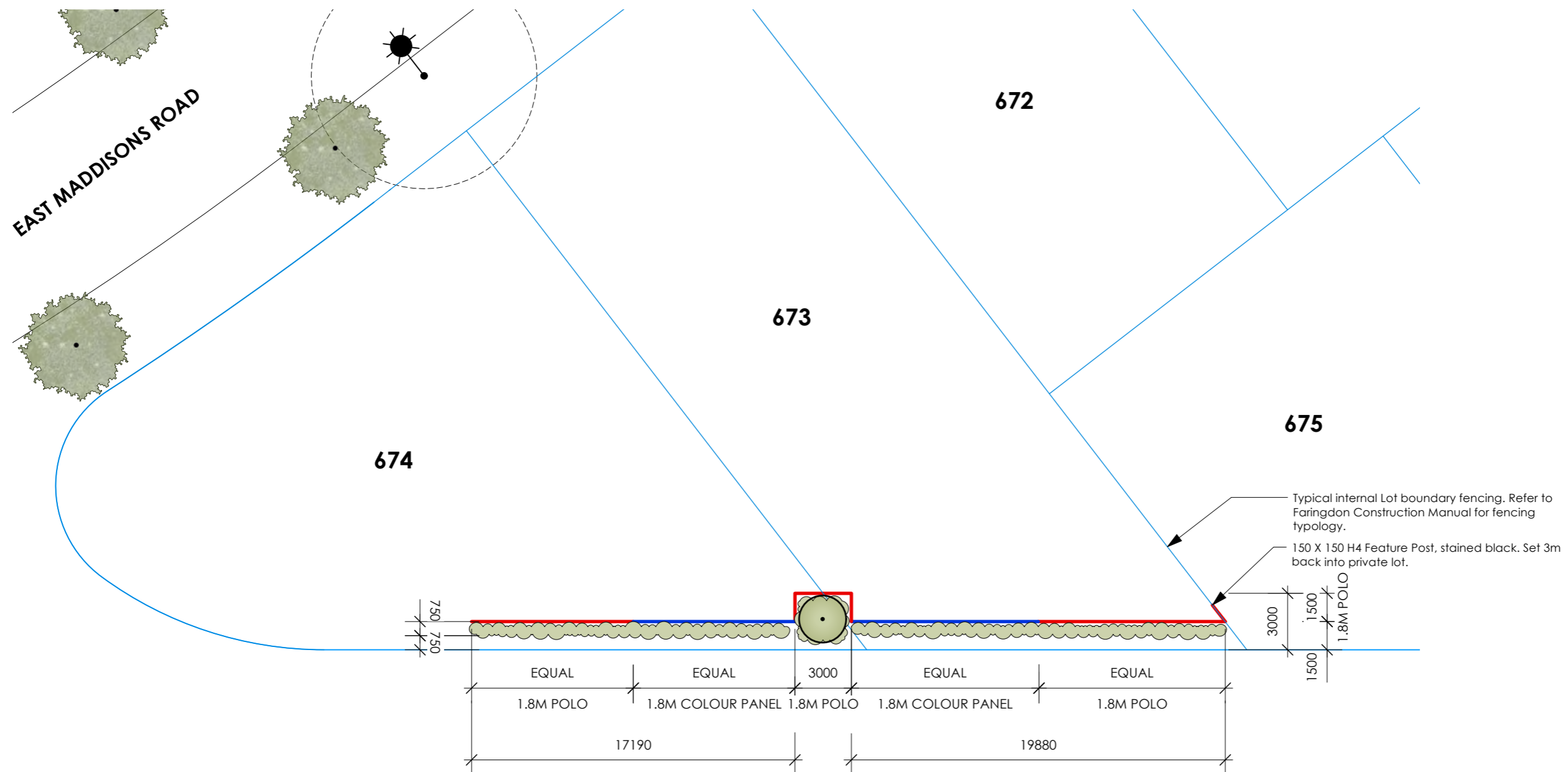
MATERIAL PALETTE



NOTE: All fencing sits within the Private lot boundary.



LOT 679, 680 & 682 BOUNDARY TREATMENTS - ELEVATION 1:300



ELEVATION 1:150

TYPICAL EXAMPLE 1 - BASED ON A SECONDARY BOUNDARY OF 30M IN LENGTH

## MATERIALS



1.8M HIGH POOL STYLE FENCE (ALUMINIUM)



1.8M HIGH AU PREFINISHED COLOURED STEEL PANEL IN 'MONUMENT' COLOUR.

## Notes

[illegible]This image shows a full page of blank handwriting practice paper. It features multiple sets of horizontal lines, each consisting of three parallel lines: two outer lines defining the height of the letters and a central dashed midline. These sets are repeated vertically down the entire page, providing a guide for letter formation and alignment. The background is white, and the lines are printed in a light gray or blue color.

## Notes

[illegible][illegible]

