



Artist impression only, actual design may vary



FROM \$482,100

Home Size 1
173m²

Section Size 1
450m²

A separate foyer flows through to the generous open-plan family, dining and entertainers kitchen with walk-in pantry. This (altered) Urban design boasts four bedrooms making for a very comfortable and useable family home.

KEY FEATURES

- › 10 Year Master Build Guarantee
- › Designer Kitchen
- › Panasonic Appliances
- › KiwiSaver/HomeStart Grant Approved
- › High Quality Specifications Throughout

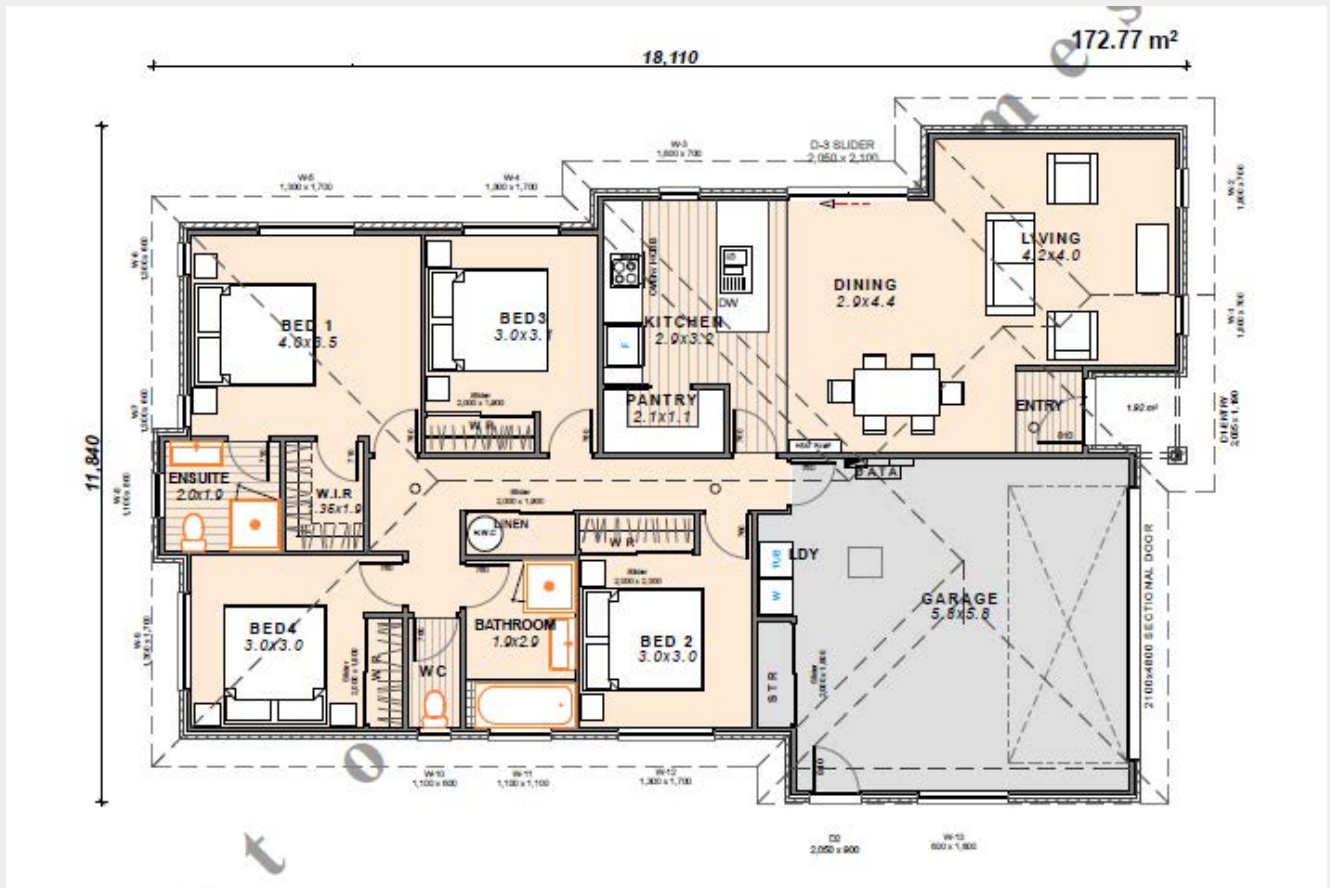
 4  1  2  2  2

Artist impression only, actual design may vary
© Copyright Today Homes Ltd.

LOT 19 The Link

Home Size 1
173m²

Section Size 1
450m²



OVERVIEW

 4 Bedroom	 1 Living	 173m ²
 2 Bathroom	 2 Toilet	 Double Garage

Artist impression only, actual design may vary
© Copyright Today Homes Ltd.



Today Homes
home building made easy since 1987



03 341 6460 www.todayhomes.co.nz