



FROM \$480,800

Home Size 1
176m²

Section Size 1
450m²

A separate entry foyer flows through to the generous open-plan family, dining and entertainers kitchen with butlers pantry. The Urban also boasts a separate living room and the large master is a secluded sanctuary with WIR and ensuite.

KEY FEATURES

- › 10 Year Master Build Guarantee
- › Designer Kitchen
- › Panasonic Appliances
- › KiwiSaver/HomeStart Grant Approved
- › High Quality Specifications Throughout

 3  2  2  2  2

Artist impression only, actual design may vary
© Copyright Today Homes Ltd.



Today Homes
home building made easy since 1987

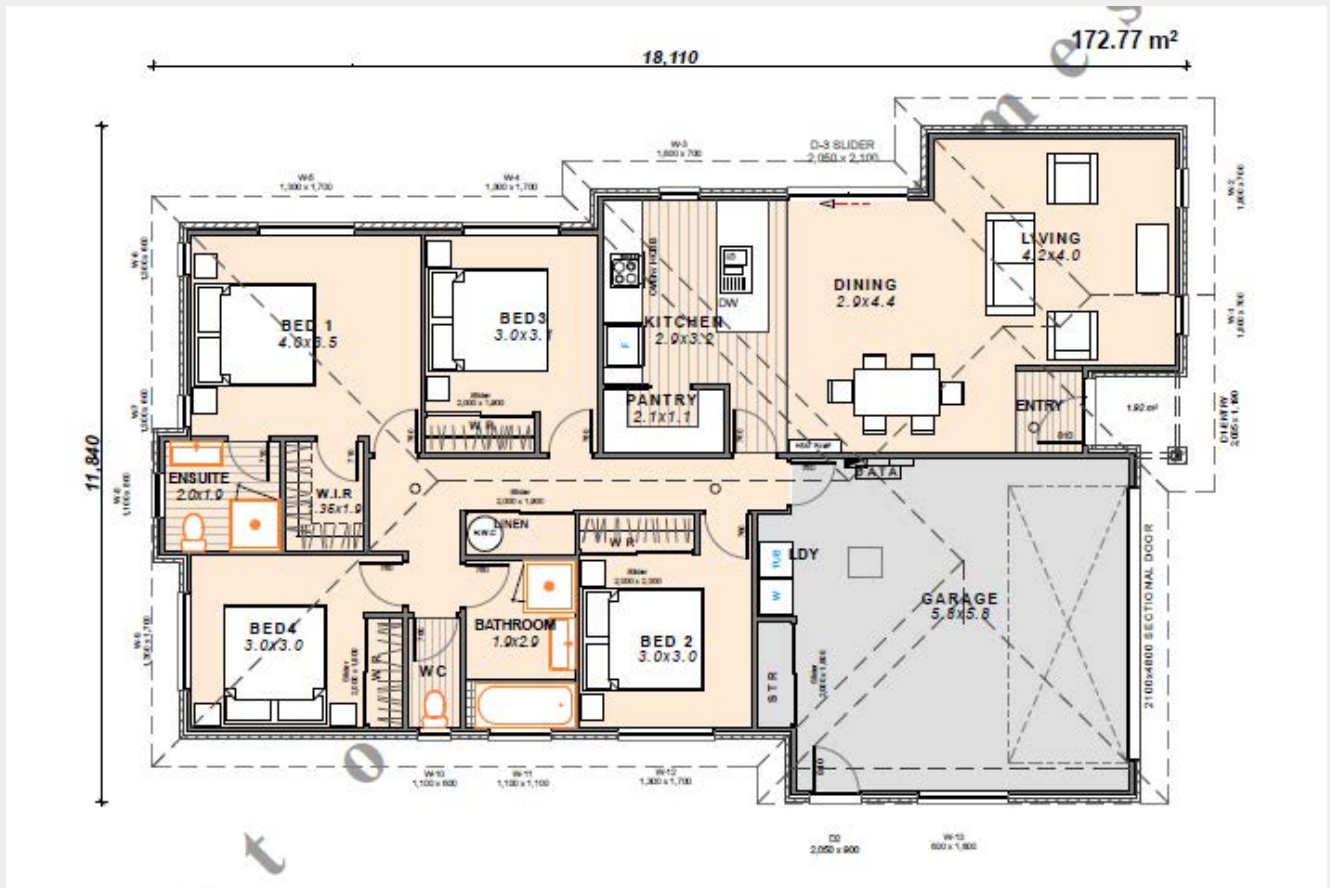


03 341 6460 www.todayhomes.co.nz

LOT22 The Link

Home Size 1
176m²

Section Size 1
450m²



OVERVIEW

 3 Bedroom	 2 Living	 176m ²
 2 Bathroom	 2 Toilet	 Double Garage

Artist impression only, actual design may vary
© Copyright Today Homes Ltd.



Today Homes
home building made easy since 1987



03 341 6460 www.todayhomes.co.nz