



Artist impression only, actual design may vary



FROM \$481,900

Home Size 1
168m²

Section Size 1
450m²

The Travis oozes street appeal. This design has all the excellent features you'd expect from a brand new home, including generous open plan living, a designer kitchen with walk-in pantry and a master bedroom with ensuite and walk in wardrobe.

KEY FEATURES

- › 10 Year Master Build Guarantee
- › Designer Kitchen
- › Panasonic Appliances
- › KiwiSaver/HomeStart Grant Approved
- › High Quality Specifications Throughout

 3  1  2  2  2

Artist impression only, actual design may vary
© Copyright Today Homes Ltd.



Today Homes
home building made easy since 1987

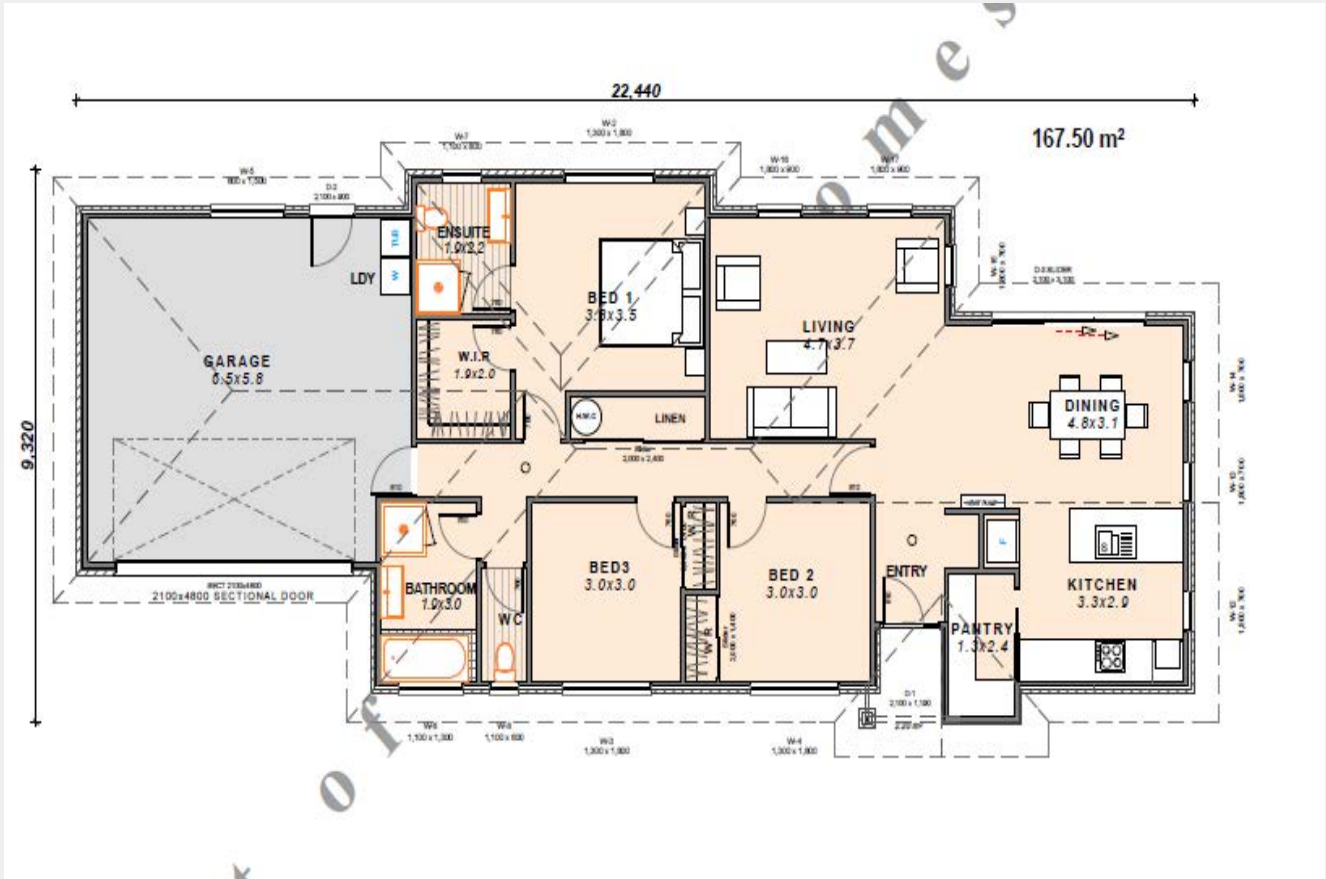


03 341 6460 www.todayhomes.co.nz

LOT 24 The Link

Home Size 1
168m²

Section Size 1
450m²



OVERVIEW

 3 Bedroom	 1 Living	 168m ²
 2 Bathroom	 2 Toilet	 Double Garage

Artist impression only, actual design may vary
© Copyright Today Homes Ltd.



Today Homes
home building made easy since 1987



03 341 6460 www.todayhomes.co.nz