



## FROM \$480,800

Home Size 1  
173m<sup>2</sup>

Section Size 1  
450m<sup>2</sup>

A separate entry foyer flows through to the generous open-plan family, dining and entertainers kitchen with butlers pantry. The Urban also boasts a separate living room and the large master is a secluded sanctuary with WIR and ensuite.

### KEY FEATURES

- › 10 Year Master Build Guarantee
- › Designer Kitchen
- › Panasonic Appliances
- › KiwiSaver/HomeStart Grant Approved
- › High Quality Specifications Throughout

 3  1  2  2  2

Artist impression only, actual design may vary  
© Copyright Today Homes Ltd.



**Today Homes**  
home building made easy since 1987

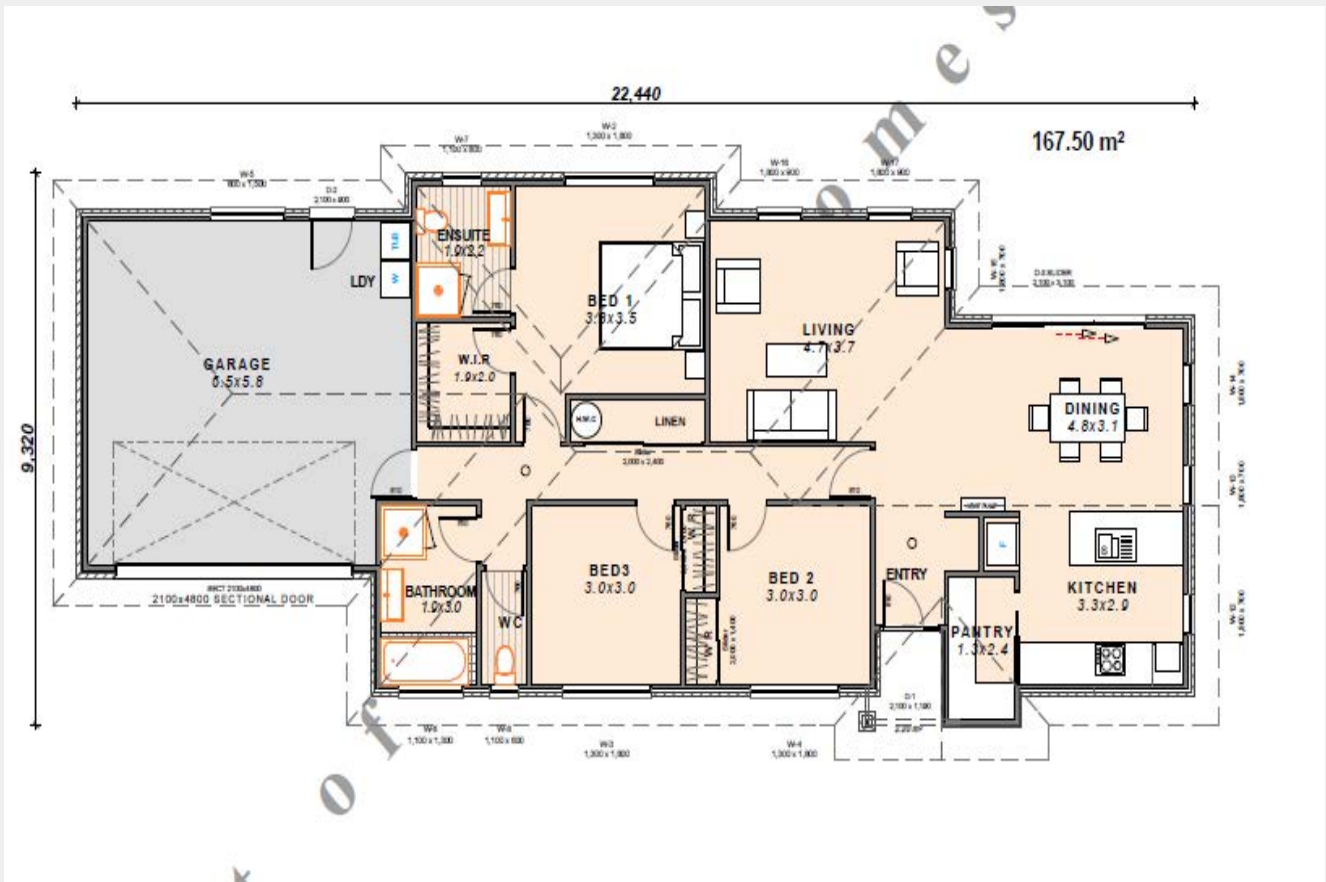


03 341 6460 [www.todayhomes.co.nz](http://www.todayhomes.co.nz)

# LOT 24 The Link

Home Size 1  
173m<sup>2</sup>

Section Size 1  
450m<sup>2</sup>



## OVERVIEW



3 Bedroom



1 Living



176m<sup>2</sup>



2 Bathroom



2 Toilet



Double Garage

Artist impression only, actual design may vary  
© Copyright Today Homes Ltd.



**Today Homes**  
home building made easy since 1987



03 341 6460 [www.todayhomes.co.nz](http://www.todayhomes.co.nz)