



Title Plan - LT 570913

Survey Number LT 570913
Surveyor Reference H20242 West Village Stage 2
Surveyor Kate Elizabeth McFarlane
Survey Firm Davie Lovell-Smith Ltd
Surveyor Declaration

Survey Details

Dataset Description Lots 2-9, 118-119, 137-140, 175-188, 196-221, 231, 242, 259, 260, 351, 400, 405 & 1005 Being Subdivision of Lot 1004 DP 561686 and easements over Lot 1001 DP 557037

Status Initiated

Land District Canterbury **Survey Class** Class A

Submitted Date **Survey Approval Date**
Deposit Date

Territorial Authorities

Selwyn District

Comprised In

RT 994423
RT 977881

Created Parcels

Parcels	Parcel Intent	Area	RT Reference
Lot 2 Deposited Plan 570913	Fee Simple Title	0.0742 Ha	1035847
Lot 3 Deposited Plan 570913	Fee Simple Title	0.0854 Ha	1035848
Lot 4 Deposited Plan 570913	Fee Simple Title	0.0704 Ha	1035849
Lot 5 Deposited Plan 570913	Fee Simple Title	0.0666 Ha	1035850
Lot 6 Deposited Plan 570913	Fee Simple Title	0.0665 Ha	1035851
Lot 7 Deposited Plan 570913	Fee Simple Title	0.0665 Ha	1035852
Lot 8 Deposited Plan 570913	Fee Simple Title	0.0746 Ha	1035853
Lot 9 Deposited Plan 570913	Fee Simple Title	0.0746 Ha	1035854
Lot 118 Deposited Plan 570913	Fee Simple Title	0.0521 Ha	1035855
Lot 119 Deposited Plan 570913	Fee Simple Title	0.0470 Ha	1035856
Lot 137 Deposited Plan 570913	Fee Simple Title	0.0553 Ha	1035857
Lot 138 Deposited Plan 570913	Fee Simple Title	0.0598 Ha	1035858
Lot 139 Deposited Plan 570913	Fee Simple Title	0.0528 Ha	1035859
Lot 140 Deposited Plan 570913	Fee Simple Title	0.0461 Ha	1035860
Lot 175 Deposited Plan 570913	Fee Simple Title	0.0450 Ha	1035861
Lot 176 Deposited Plan 570913	Fee Simple Title	0.0450 Ha	1035862
Lot 177 Deposited Plan 570913	Fee Simple Title	0.0450 Ha	1035863
Lot 178 Deposited Plan 570913	Fee Simple Title	0.0450 Ha	1035864
Lot 179 Deposited Plan 570913	Fee Simple Title	0.0450 Ha	1035865
Lot 180 Deposited Plan 570913	Fee Simple Title	0.0450 Ha	1035866
Lot 181 Deposited Plan 570913	Fee Simple Title	0.0495 Ha	1035867
Lot 182 Deposited Plan 570913	Fee Simple Title	0.0495 Ha	1035868

Title Plan - LT 570913

Created Parcels

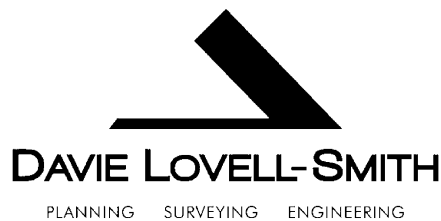
Parcels	Parcel Intent	Area	RT Reference
Lot 183 Deposited Plan 570913	Fee Simple Title	0.0450 Ha	1035869
Lot 184 Deposited Plan 570913	Fee Simple Title	0.0450 Ha	1035870
Lot 185 Deposited Plan 570913	Fee Simple Title	0.0450 Ha	1035871
Lot 186 Deposited Plan 570913	Fee Simple Title	0.0450 Ha	1035872
Lot 187 Deposited Plan 570913	Fee Simple Title	0.0450 Ha	1035873
Lot 188 Deposited Plan 570913	Fee Simple Title	0.0450 Ha	1035874
Lot 196 Deposited Plan 570913	Fee Simple Title	0.0549 Ha	1035875
Lot 197 Deposited Plan 570913	Fee Simple Title	0.0480 Ha	1035876
Lot 198 Deposited Plan 570913	Fee Simple Title	0.0480 Ha	1035877
Lot 199 Deposited Plan 570913	Fee Simple Title	0.0480 Ha	1035878
Lot 200 Deposited Plan 570913	Fee Simple Title	0.0480 Ha	1035879
Lot 201 Deposited Plan 570913	Fee Simple Title	0.0480 Ha	1035880
Lot 202 Deposited Plan 570913	Fee Simple Title	0.0529 Ha	1035881
Lot 203 Deposited Plan 570913	Fee Simple Title	0.0479 Ha	1035882
Lot 204 Deposited Plan 570913	Fee Simple Title	0.0550 Ha	1035883
Lot 205 Deposited Plan 570913	Fee Simple Title	0.0600 Ha	1035884
Lot 206 Deposited Plan 570913	Fee Simple Title	0.0600 Ha	1035885
Lot 207 Deposited Plan 570913	Fee Simple Title	0.0600 Ha	1035886
Lot 208 Deposited Plan 570913	Fee Simple Title	0.0600 Ha	1035887
Lot 209 Deposited Plan 570913	Fee Simple Title	0.0550 Ha	1035888
Lot 210 Deposited Plan 570913	Fee Simple Title	0.0515 Ha	1035889
Lot 211 Deposited Plan 570913	Fee Simple Title	0.0565 Ha	1035890
Lot 212 Deposited Plan 570913	Fee Simple Title	0.0581 Ha	1035891
Lot 213 Deposited Plan 570913	Fee Simple Title	0.0581 Ha	1035892
Lot 214 Deposited Plan 570913	Fee Simple Title	0.0581 Ha	1035893
Lot 215 Deposited Plan 570913	Fee Simple Title	0.0581 Ha	1035894
Lot 216 Deposited Plan 570913	Fee Simple Title	0.0581 Ha	1035895
Lot 217 Deposited Plan 570913	Fee Simple Title	0.0581 Ha	1035896
Lot 218 Deposited Plan 570913	Fee Simple Title	0.0581 Ha	1035897
Lot 219 Deposited Plan 570913	Fee Simple Title	0.0581 Ha	1035898
Lot 220 Deposited Plan 570913	Fee Simple Title	0.0581 Ha	1035899
Lot 221 Deposited Plan 570913	Fee Simple Title	0.0653 Ha	1035900
Lot 231 Deposited Plan 570913	Fee Simple Title	0.0548 Ha	1035901
Lot 242 Deposited Plan 570913	Fee Simple Title	0.0481 Ha	1035902
Lot 259 Deposited Plan 570913	Fee Simple Title	0.0622 Ha	1035903
Lot 260 Deposited Plan 570913	Fee Simple Title	0.0727 Ha	1035904
Lot 351 Deposited Plan 570913	Fee Simple Title	0.0005 Ha	1035905
Lot 400 Deposited Plan 570913	Vesting on Deposit for Road	1.2375 Ha	
Lot 405 Deposited Plan 570913	Vesting on Deposit for Road	0.5167 Ha	
Lot 1005 Deposited Plan 570913	Fee Simple Title	6.8121 Ha	1036636
Area A Deposited Plan 570913	Easement		
Area B Deposited Plan 570913	Easement		



Title Plan - LT 570913

Created Parcels

Parcels	Parcel Intent	Area	RT Reference
Area C Deposited Plan 570913	Easement		
Area D Deposited Plan 570913	Easement		
Area E Deposited Plan 570913	Easement		
Area F Deposited Plan 570913	Easement		
Area G Deposited Plan 570913	Easement		
Total Area		<hr/> 11.7774 Ha	



Davie, Lovell-Smith Ltd
116 Wrights Road, Addington
PO Box 679, Christchurch 8140
New Zealand
Telephone (03) 379-0793,
E-mail: office@dls.co.nz

Surveyor Reference: H20242 West Village Stage 2

DP 570913

SCHEDULE OF EXISTING EASEMENTS TO BE SURRENDERED

Purpose	Servient Tenement (Burdened Land)	Shown	Document
Right to drain water in gross	Lot 1004 DP 561686	A DP 561686	12232979.6
Right to drain sewage in gross	Lot 1004 DP 561686	A & B DP 561686	12232979.6

MEMORANDUM OF EASEMENTS IN GROSS

Purpose	Servient Tenement (Burdened Land)	Shown	Grantee
Right to drain sewage in gross	Lot 1005	A, B, C & D	Selwyn District Council
Right to drain water in gross	Lot 1005	E	Selwyn District Council

SCHEDULE OF EASEMENTS IN GROSS

Purpose	Servient Tenement (Burdened Land)	Shown	Grantee
Right to convey electricity in gross	Lot 1001 DP 557037 (RT 977881)	F & G	Orion New Zealand Limited
Right to convey telecommunications in gross	Lot 1001 DP 557037 (RT 977881)	F & G	Enable Networks Limited

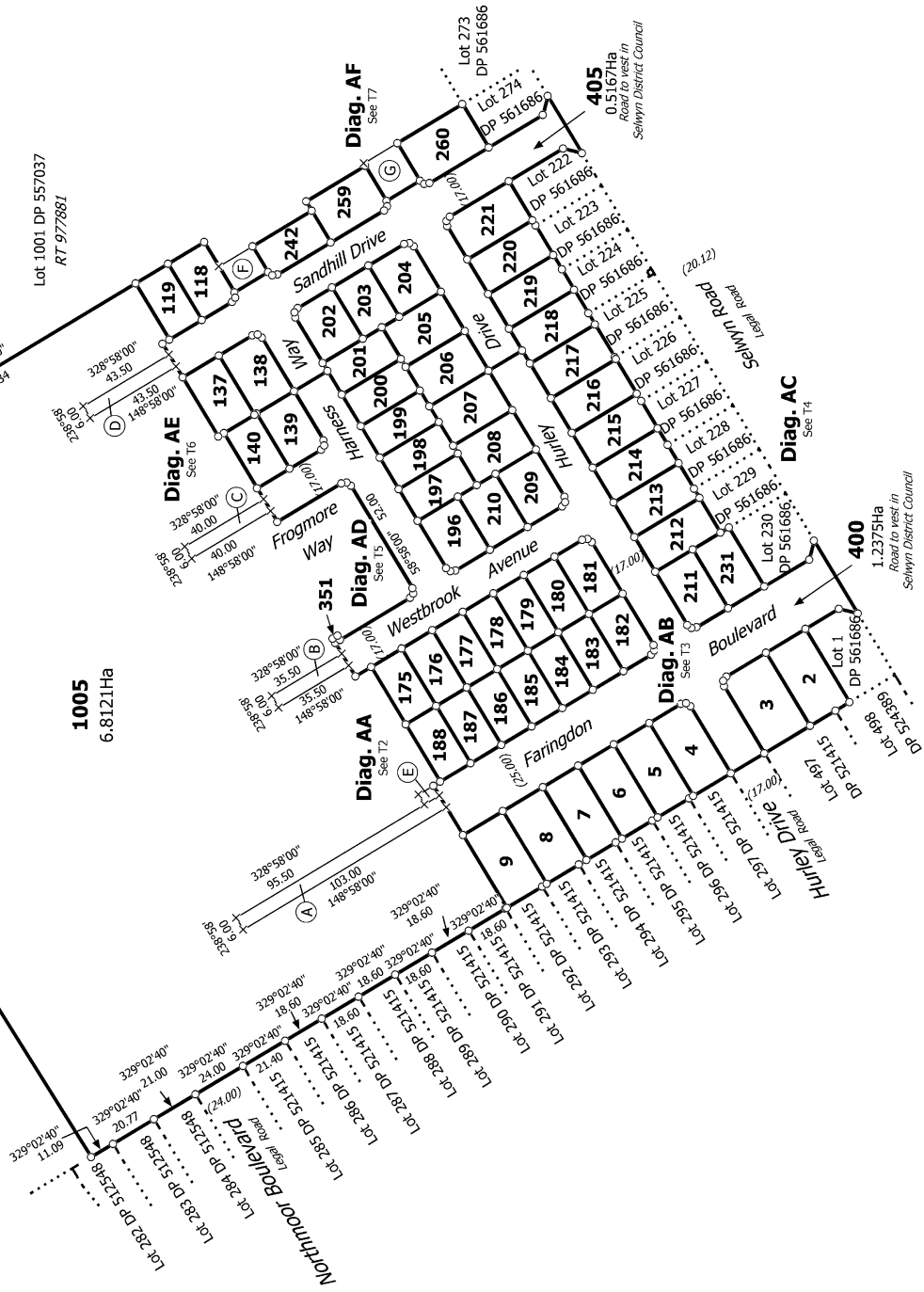


Diag. A

Lot 2 DP 82966

Lot 1001 DP 557037
RT 977881

1005
6.8121Ha



H20242
RC 215539

T 1/8

Land District: Canterbury

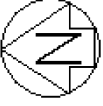
Digitally Generated Plan

Generated on: 17/12/2021 1:36pm Page 5 of 12

Lots 2-9, 118-119, 137-140, 175-188, 196-221, 231, 242, 259, 260, 351, 400, 405
& 1005 Being Subdivision of Lot 1004 DP 561686 and easements over Lot 1001
DP 557037

Surveyor: Kate Elizabeth McFarlane
Firm: Davie Lovell-Smith Ltd

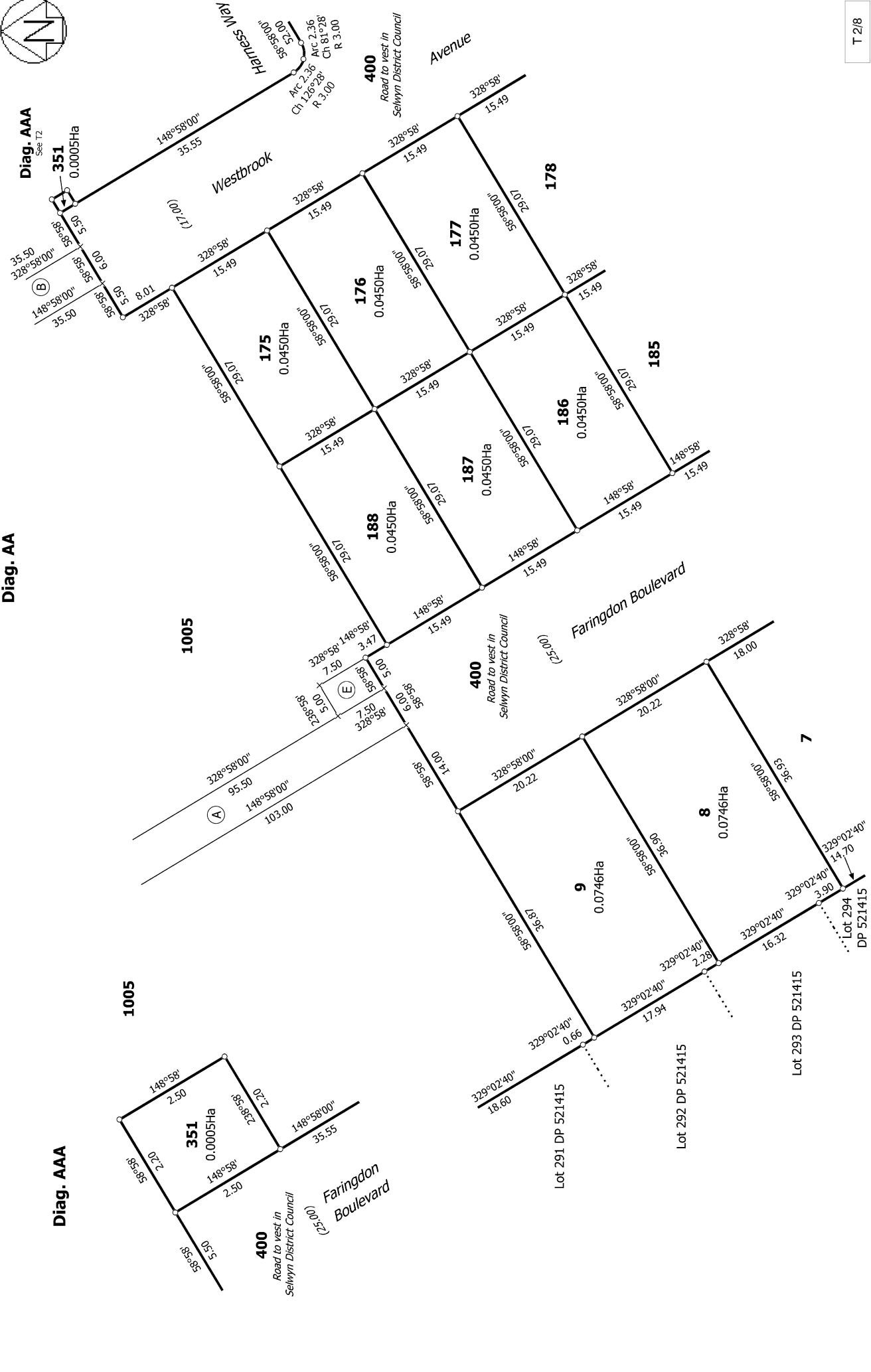
Title Plan
LT 570913
DRAFT



Diag. AA

Diag. AAA
 Sec 12

Diag. AAA



T 2/8

Land District: Canterbury

Digitally Generated Plan

Generated on: 17/12/2021 1:38pm Page 6 of 12

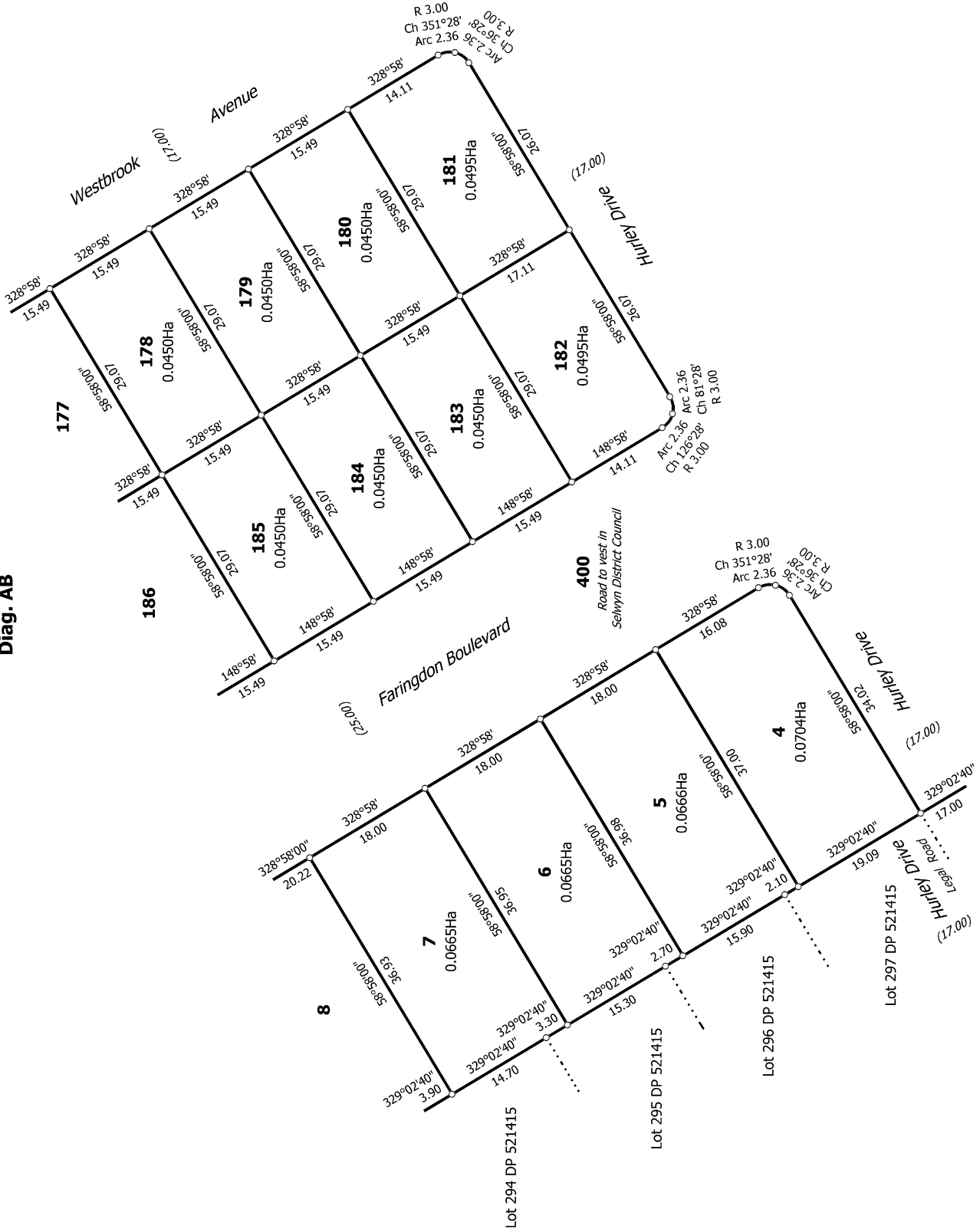
Lots 2-9, 118-119, 137-140, 175-188, 196-221, 231, 242, 259, 260, 351, 400, 405
 & 1005 Being Subdivision of Lot 1004 DP 561686 and easements over Lot 1001
 DP 557037

Surveyor: Kate Elizabeth McFarlane
 Firm: Davie Lovell-Smith Ltd

Title Plan
 LT 570913
 DRAFT



Diag. AB



T 3/8

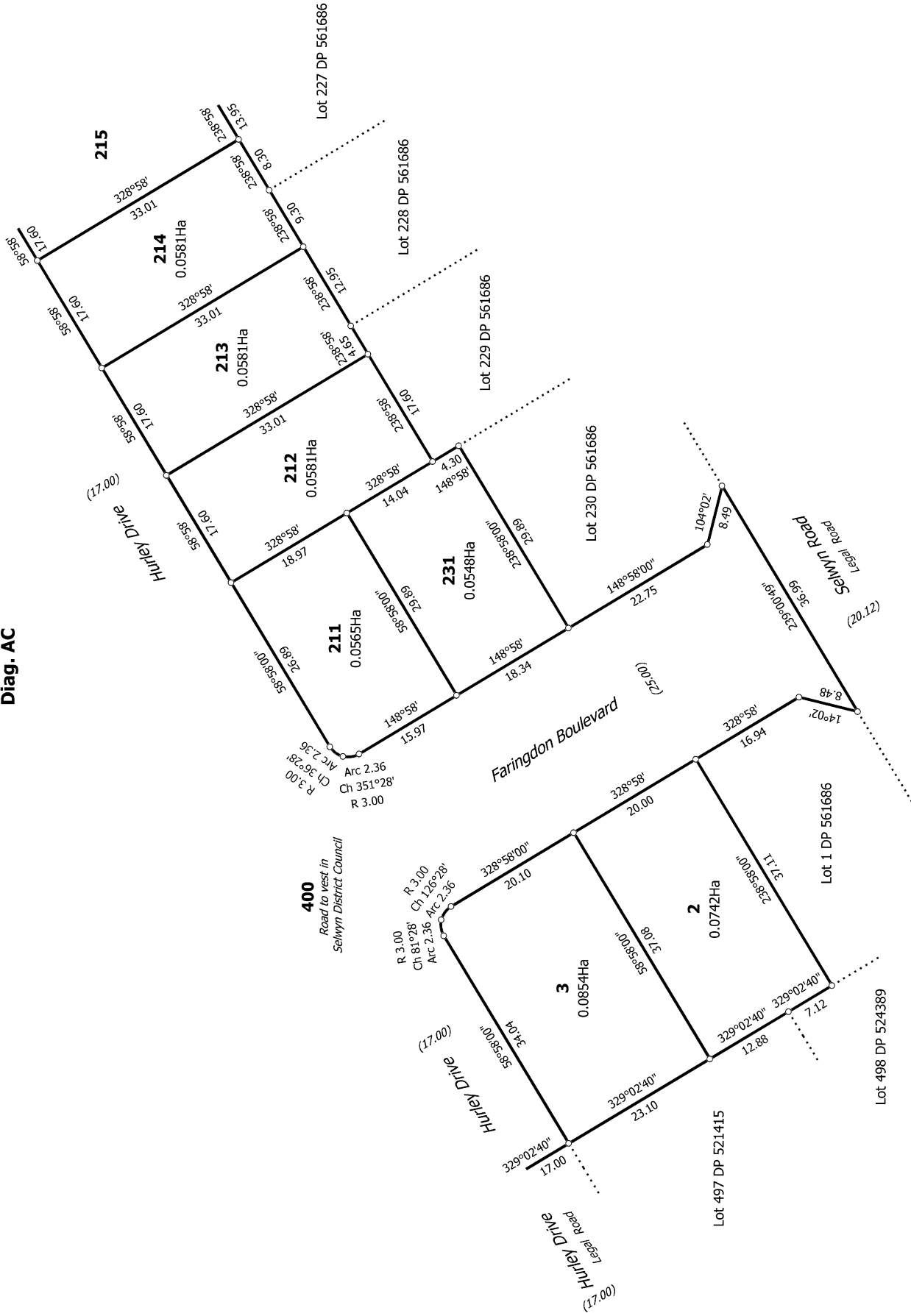
Title Plan
LT 570913
DRAFT

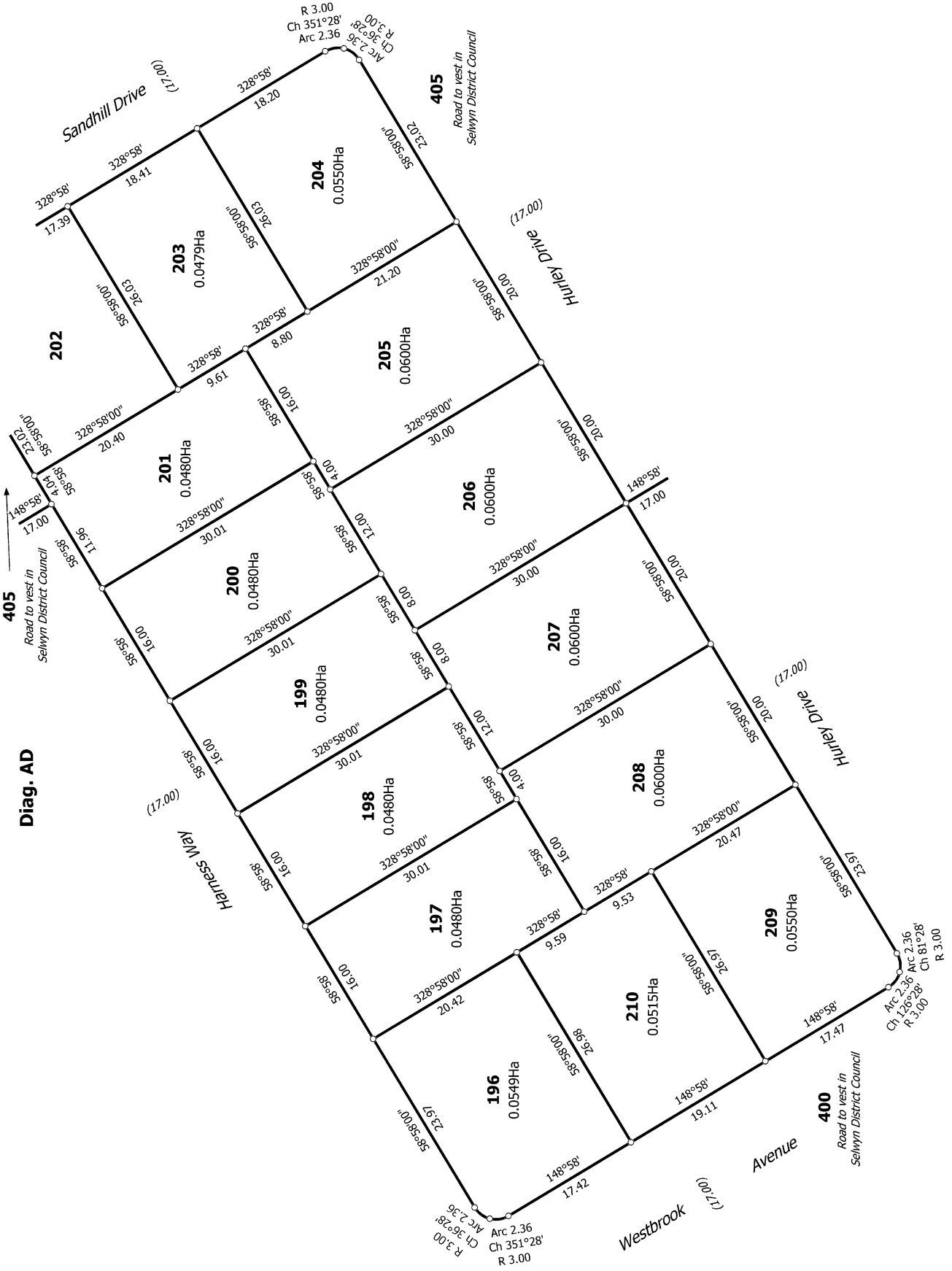
Surveyor: Kate Elizabeth McFarlane
Firm: Davie Lovell-Smith Ltd

Lots 2-9, 118-119, 137-140, 175-188, 196-221, 231, 242, 259, 260, 351, 400, 405
& 1005 Being Subdivision of Lot 1004 DP 561686 and easements over Lot 1001
DP 557037



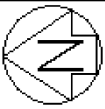
Diag. AC



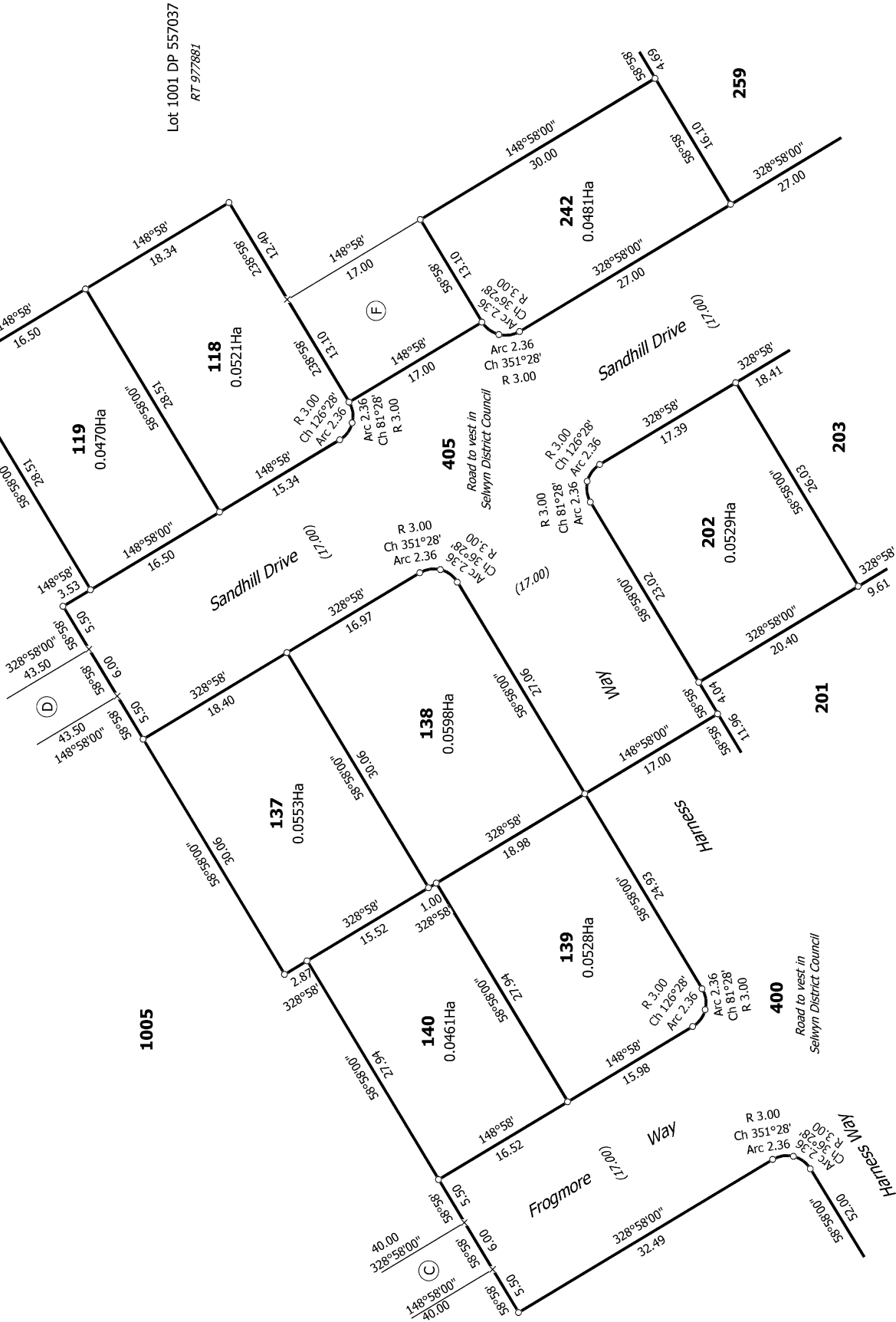


T 5/8

<p>Land District: Canterbury</p> <p>Digitally Generated Plan</p> <p>Generated on: 17/12/2021 1:38pm Page 9 of 12</p>	<p>Lots 2-9, 118-119, 137-140, 175-188, 196-221, 231, 242, 259, 260, 351, 400, 405 & 1005 Being Subdivision of Lot 1004 DP 561686 and easements over Lot 1001 DP 557037</p>	<p>Surveyor: Kate Elizabeth McFarlane</p> <p>Firm: Davie Lovell-Smith Ltd</p>	<p>Title Plan</p> <p>LT 570913</p> <p>DRAFT</p>
---	---	---	--



Diag. AE



Lot 1001 DP 557037
RT 977881

T 6/8

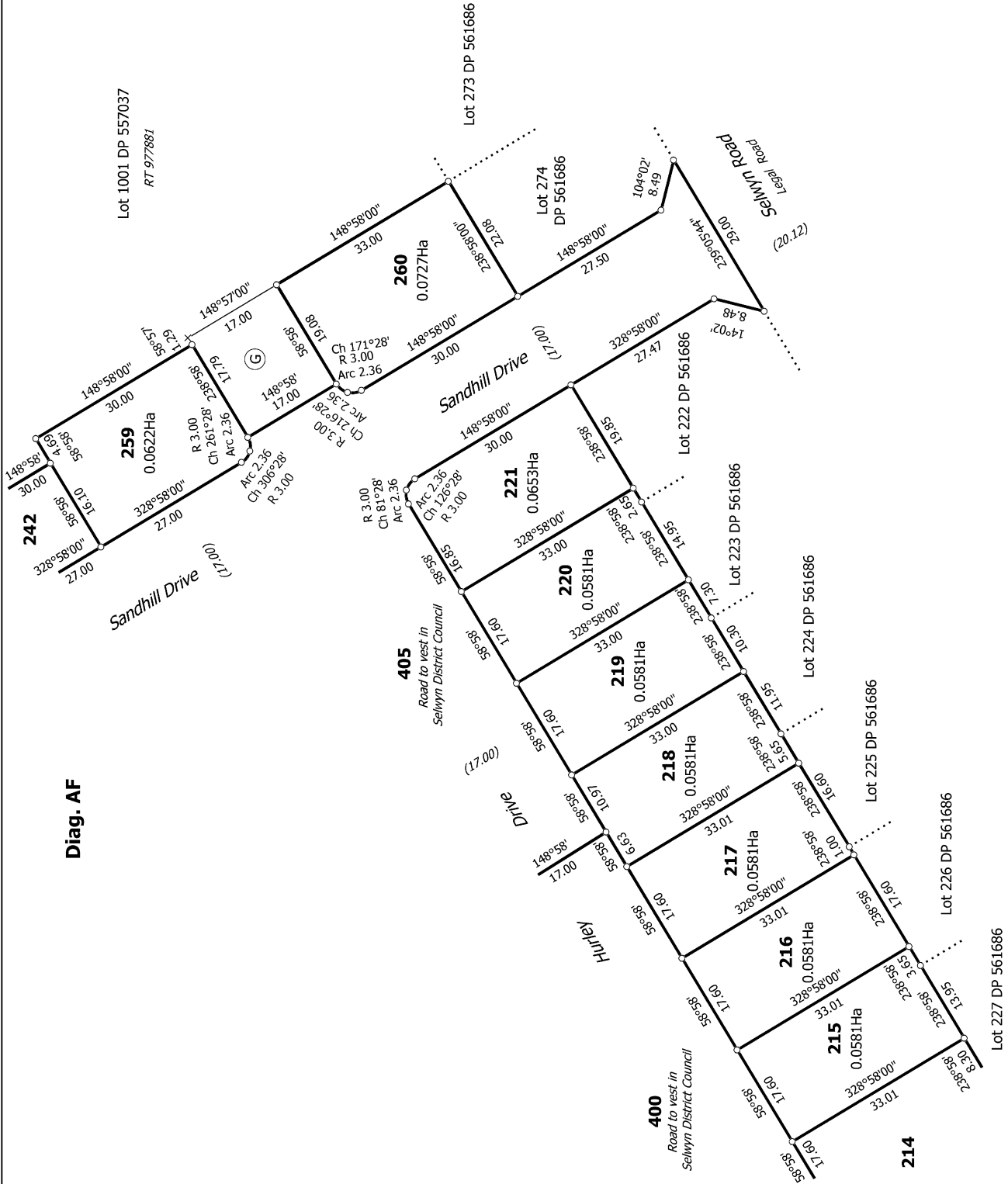
Title Plan
LT 570913
DRAFT

Surveyor: Kate Elizabeth McFarlane
Firm: Davie Lovell-Smith Ltd

Lots 2-9, 118-119, 137-140, 175-188, 196-221, 231, 242, 259, 260, 351, 400, 405
& 1005 Being Subdivision of Lot 1004 DP 561686 and easements over Lot 1001
DP 557037



Diag. AF



T 7/8

Land District: Canterbury

Digitally Generated Plan

Generated on: 17/12/2021 1:36pm Page 11 of 12

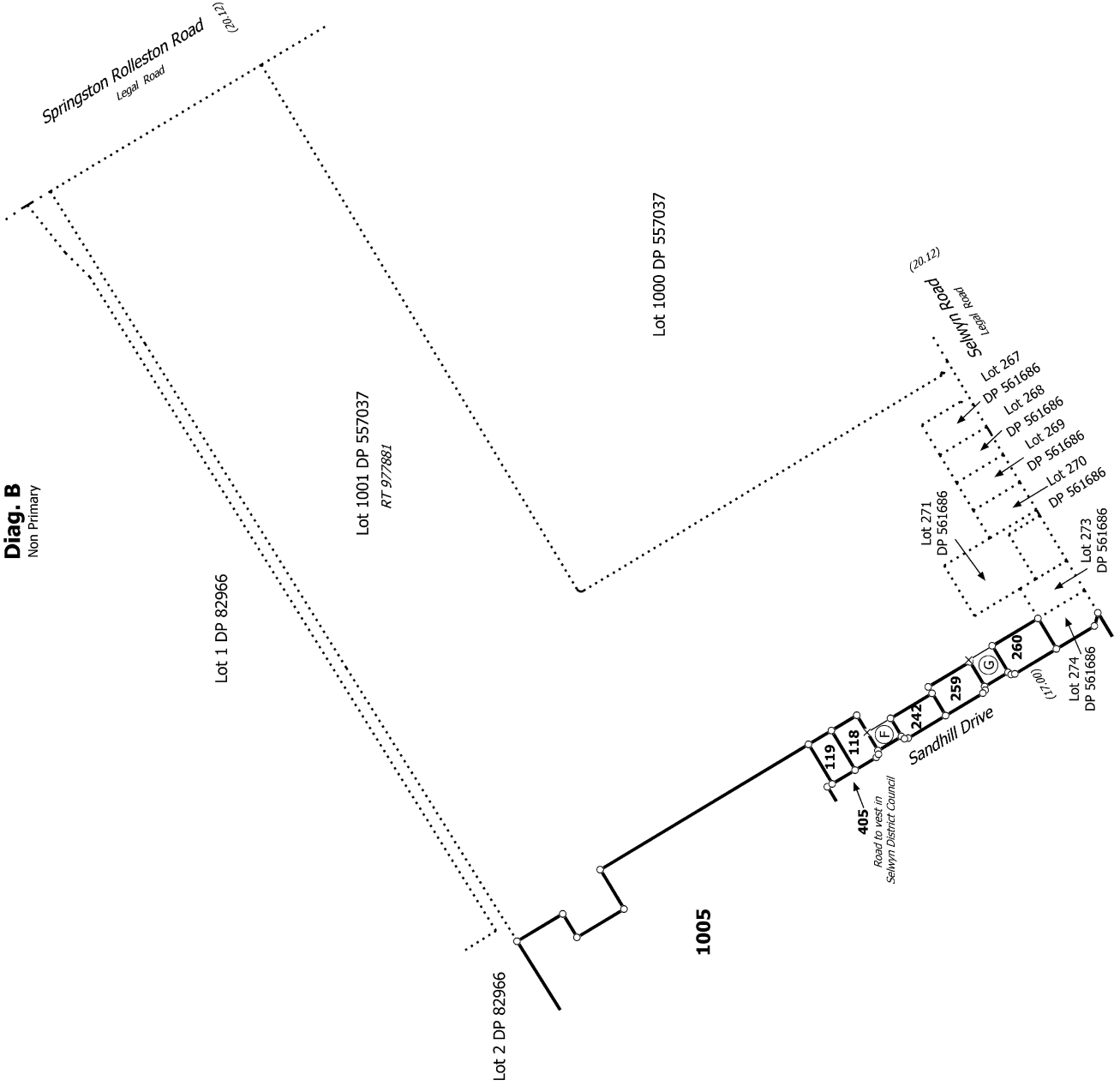
Lots 2-9, 118-119, 137-140, 175-188, 196-221, 231, 242, 259, 260, 351, 400, 405 & 1005 Being Subdivision of Lot 1004 DP 561686 and easements over Lot 1001 DP 557037

Surveyor: Kate Elizabeth McFarlane
Firm: Davie Lovell-Smith Ltd

**Title Plan
LT 570913
DRAFT**



Diag. B
Non Primary



T 8/8

Land District: Canterbury

Digitally Generated Plan

Generated on: 17/12/2021 1:38pm Page 12 of 12

Lots 2-9, 118-119, 137-140, 175-188, 196-221, 231, 242, 259, 260, 351, 400, 405
& 1005 Being Subdivision of Lot 1004 DP 561686 and easements over Lot 1001
DP 557037

Surveyor: Kate Elizabeth McFarlane
Firm: Davie Lovell-Smith Ltd

Title Plan
LT 570913
DRAFT