

Westwood Stages 1 - 3

# Fencing Manual.



You're home.

Faringdon  
Rolleston



# Introduction

Westwood Faringdon will include a range of landscape features supplied by the Developer. These will include walls, privacy fencing, gates and planting.

This Fencing Manual has been provided to clearly show the landscape features that will be provided on each lot within Westwood, Faringdon.

Please refer to the Faringdon Construction Manual for further information on fencing options not supplied by the Developer.

---

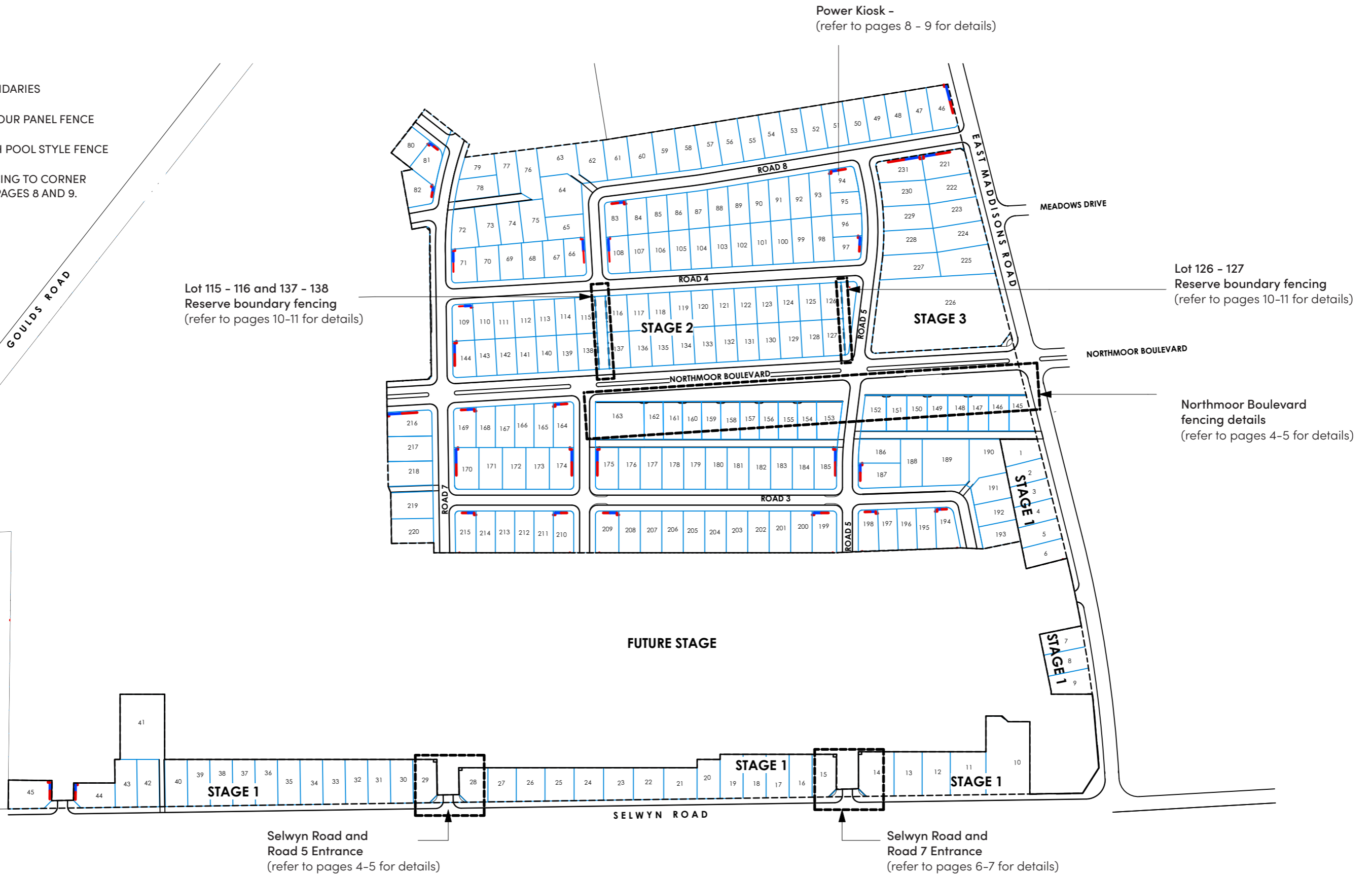
# Contents

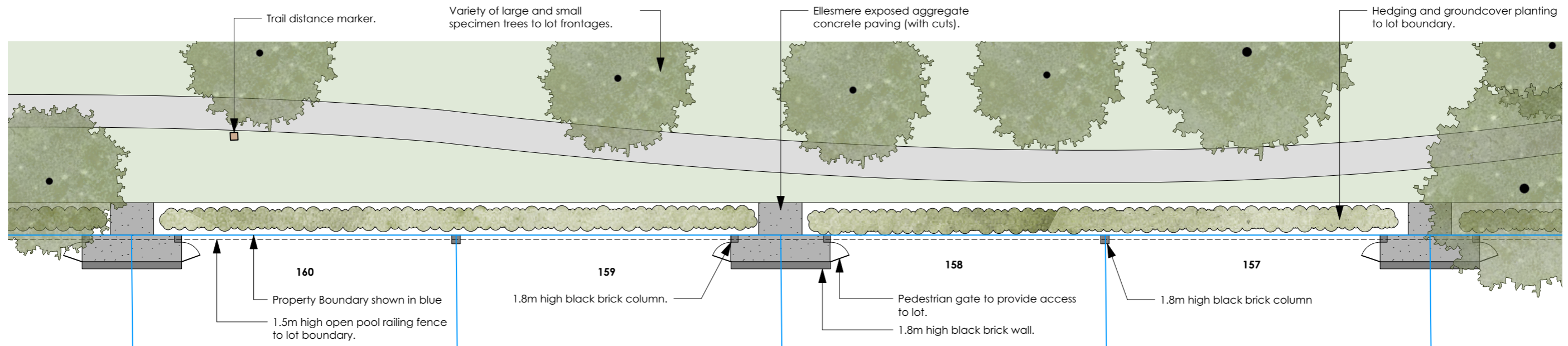
<b>1. Fencing Masterplan</b>	2
<b>2. Northmoor Boulevard - Lot Boundary</b>	4
<b>3. Selwyn Road - Entrances</b>	6
<b>4. Typical Corner Section Plan</b>	8
<b>5. Reserve Lot Boundary Treatment</b>	10

The fencing and landscape features set out in this manual reflect Hughes Development's intentions regarding developer constructed fencing as at the date of publication. Hughes Developments may make such variations, amendments and additions to this manual as are required by any territorial or statutory authority, or which (in the opinion of Hughes Developments) will enhance the visual appeal of the Faringdon subdivision.

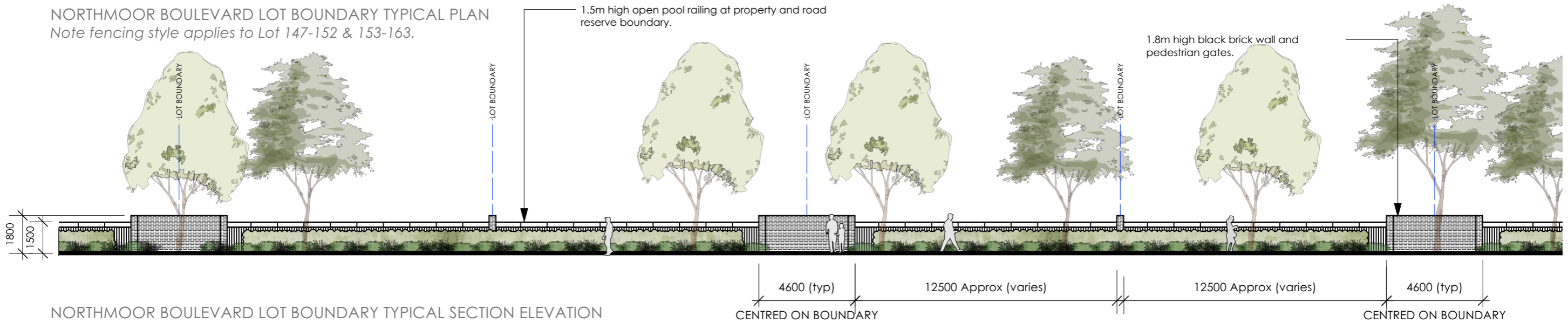
LEGEND

- LOT BOUNDARIES
  - 1.8M COLOUR PANEL FENCE
  - 1.8M HIGH POOL STYLE FENCE
- FOR FENCING TO CORNER LOTS TO PAGES 8 AND 9.





NORTHMOOR BOULEVARD LOT BOUNDARY TYPICAL PLAN  
Note fencing style applies to Lot 147-152 & 153-163.



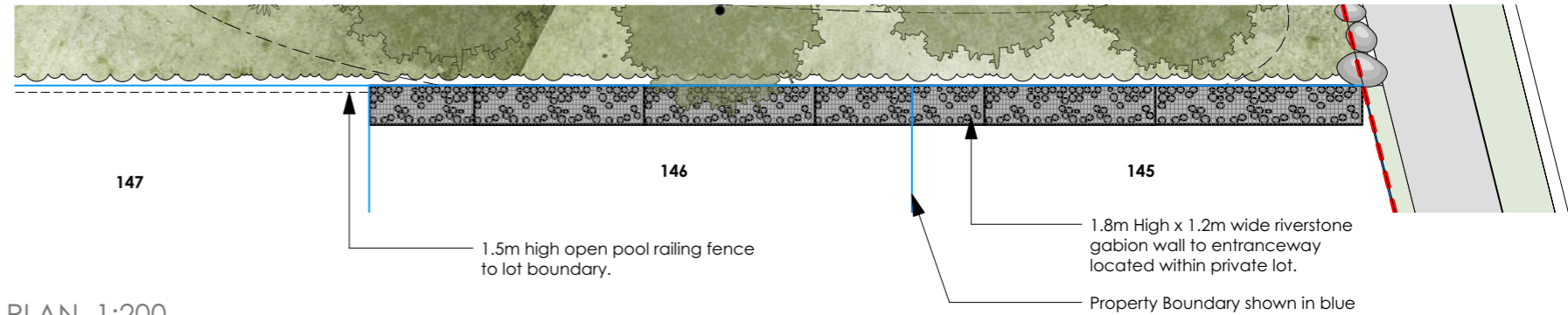
NORTHMOOR BOULEVARD LOT BOUNDARY TYPICAL SECTION ELEVATION



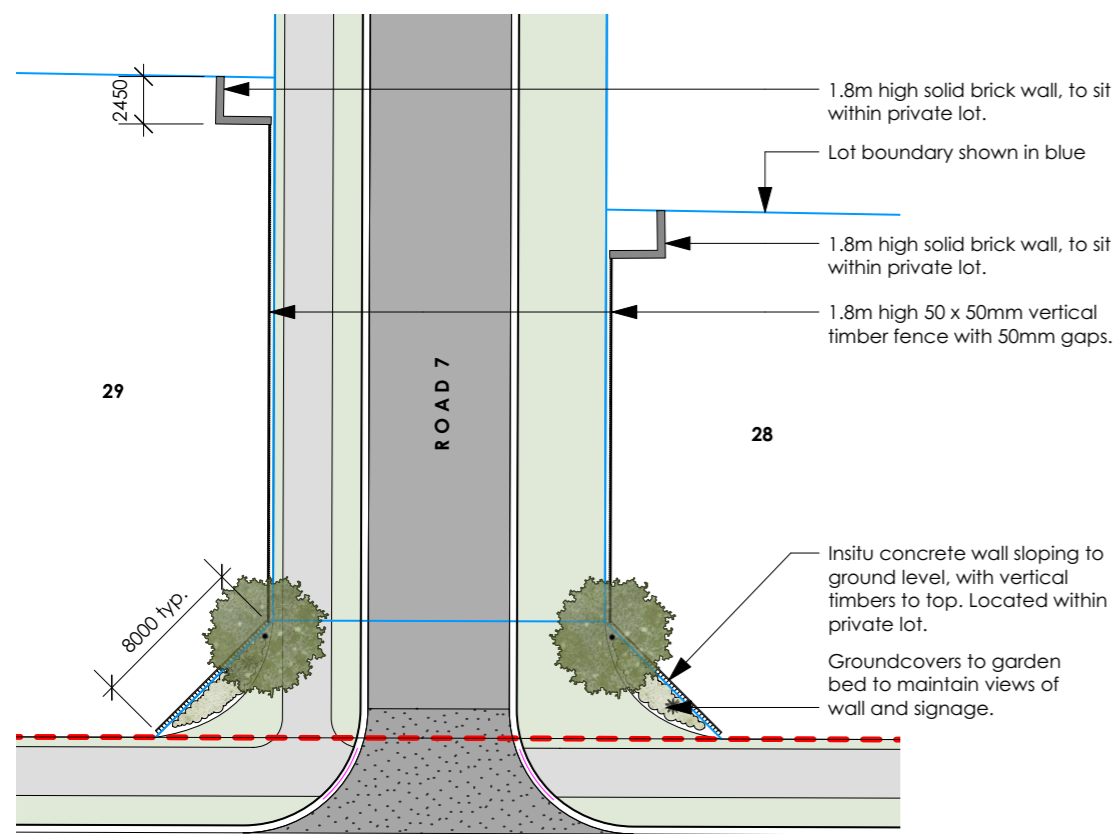
MATERIAL PALETTE



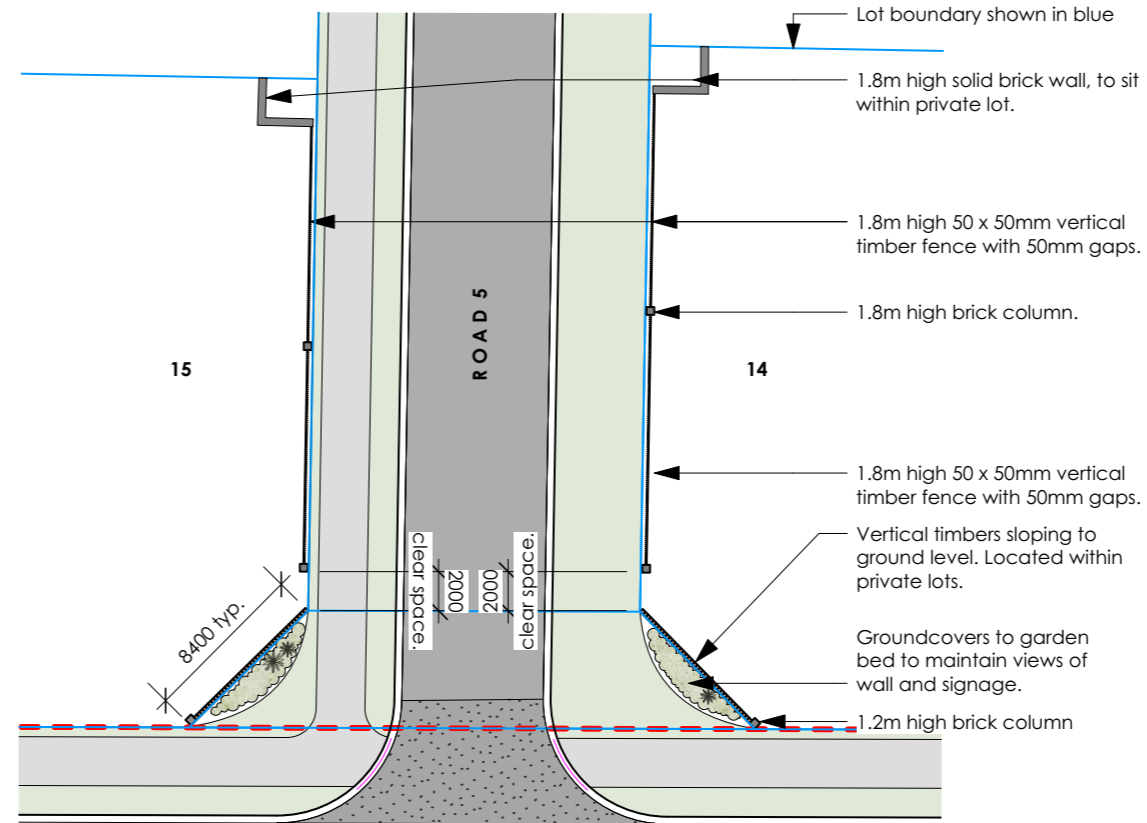
1.8m high brick wall and gates and 1.5m high open railing fence to frontage. 1.8m high Riverstone Gabion wall to North side of Lot 145, 146 - to sit within lot boundary.



PLAN 1:200  
Note fencing style applies to Lot 145 & 146



SELWYN ROAD



SELWYN ROAD

MATERIAL PALETTE



VERTICAL TIMBER TO CORNER



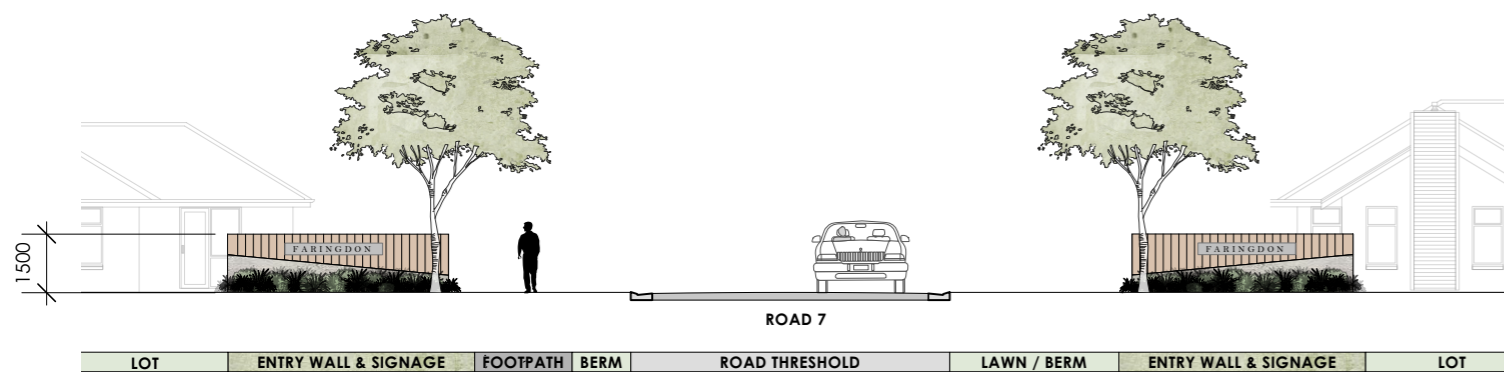
PRECAST CONCRETE



BRICK

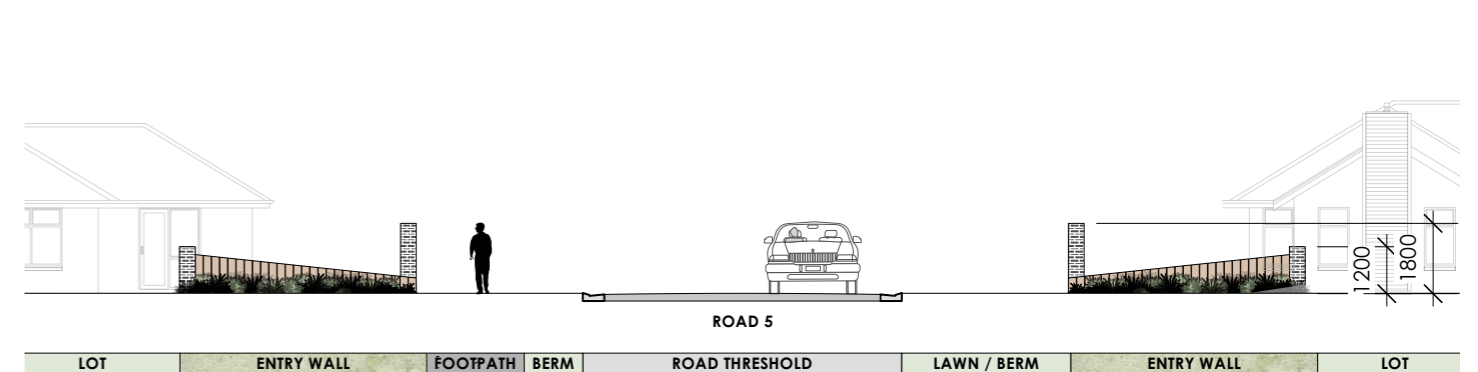
SELWYN ROAD - ROAD 7: SECTION ELEVATION 1:200

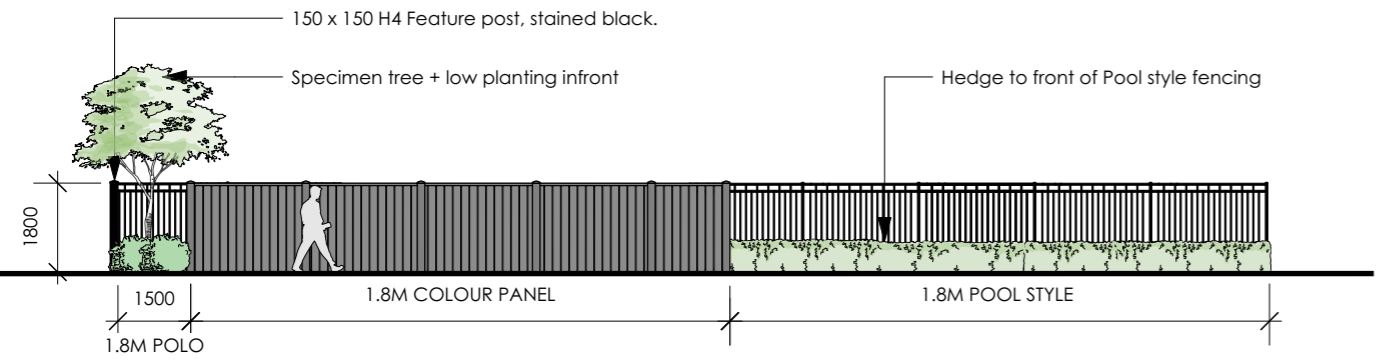
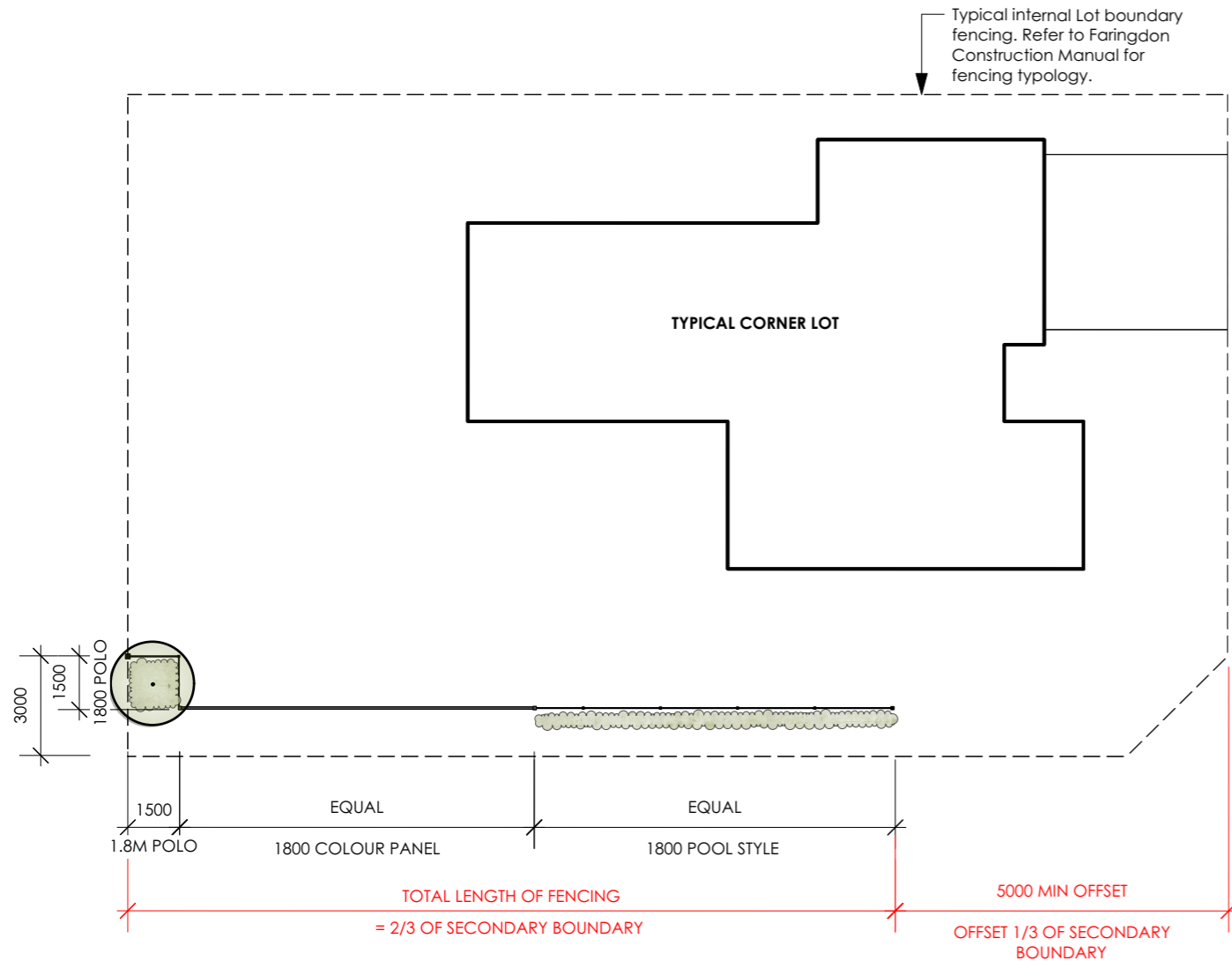
The below entrance walls into Road 7 are composed of a 1.5m high precast concrete formwork with vertical timbers sitting on top of the concrete wall. & signage. A mixture of low natives and exotics to sit in front of entrance wall.



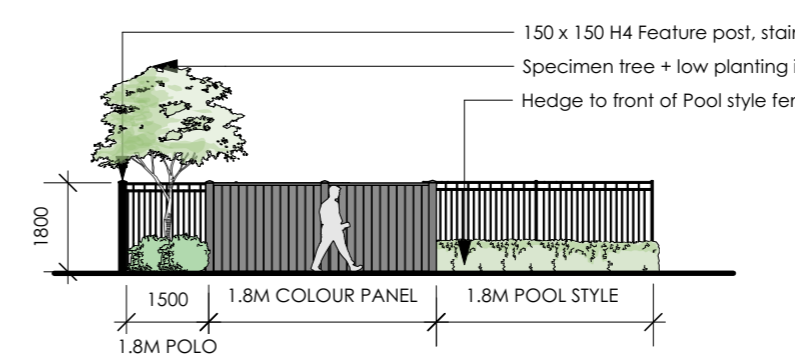
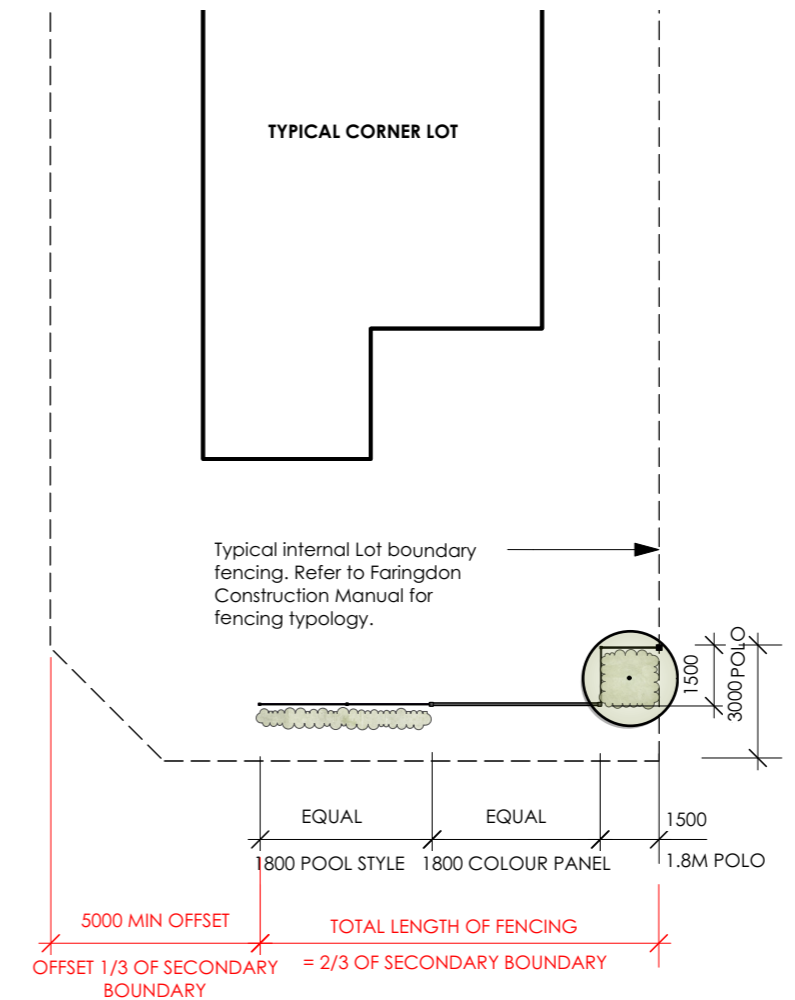
SELWYN ROAD - ROAD 5: SECTION ELEVATION 1:200

The below entrance walls into Road 5 are composed of a 1.2m high brick column with vertical timbers sloping down towards the ground. A mixture of low natives and exotics to sit in front of entrance wall.

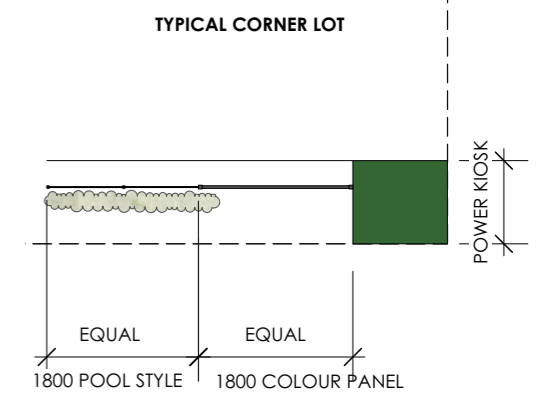




ELEVATION 1:150  
TYPICAL EXAMPLE 1 - BASED ON A SECONDARY BOUNDARY OF 30M IN LENGTH



ELEVATION 1:150  
TYPICAL EXAMPLE 2 - BASED ON A SECONDARY BOUNDARY OF 13M IN LENGTH



**NOTE:** When power kiosk is within typical corner section remove specimen tree and fencing for power kiosk.

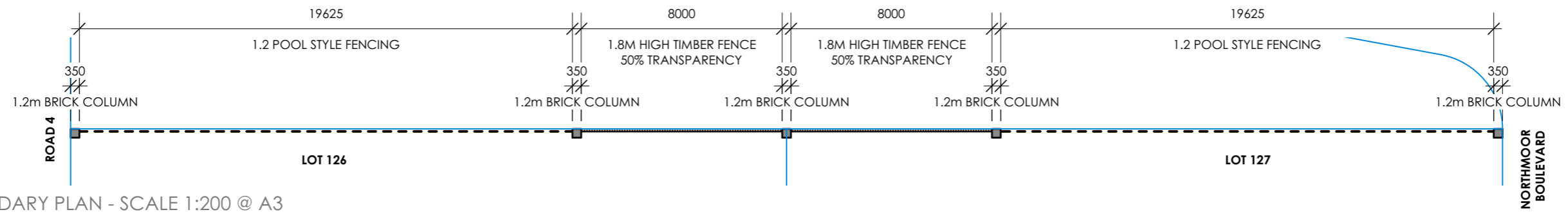
MATERIALS



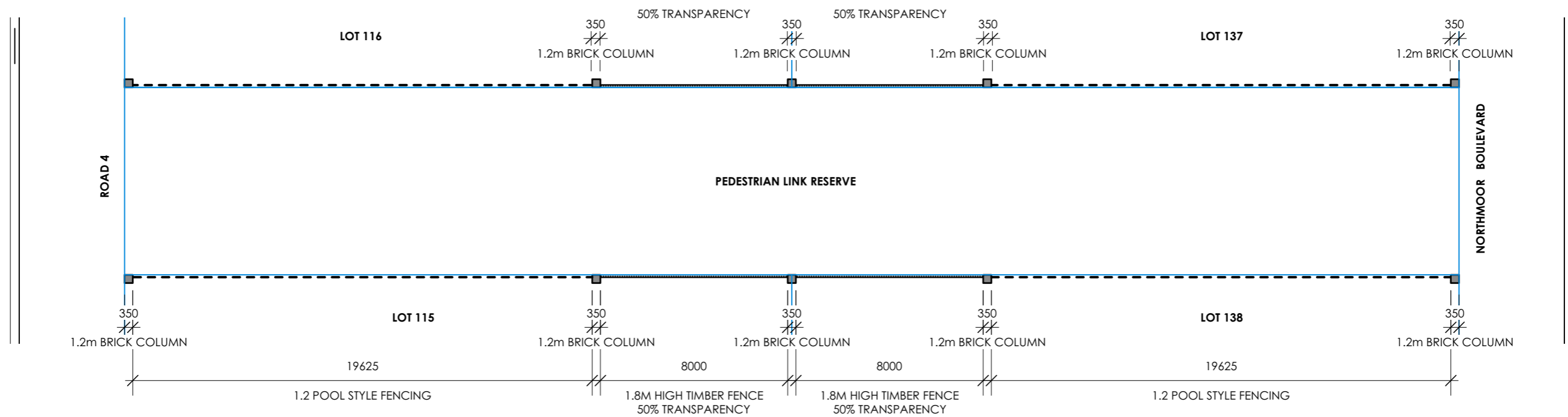
1.8M HIGH POOL STYLE FENCE (ALUMINIUM)



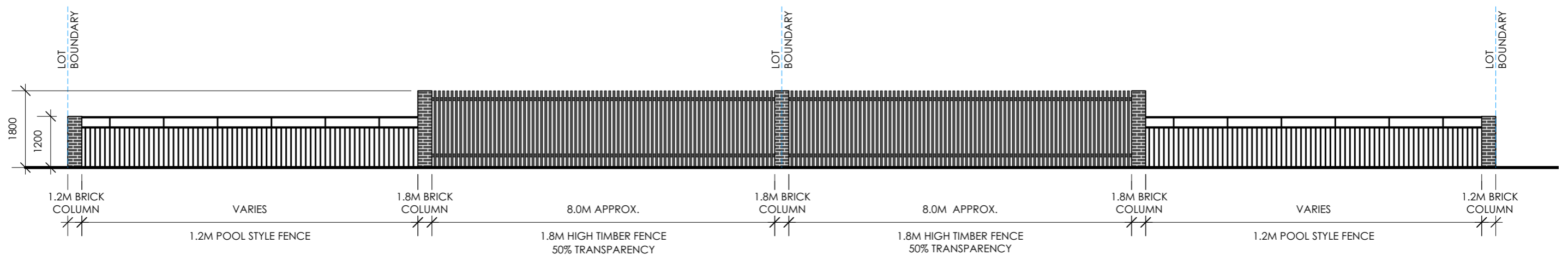
1.8M HIGH AU PREFINISHED COLOURED STEEL PANEL IN 'THUNDER CLOUD' COLOUR.



LOT BOUNDARY PLAN - SCALE 1:200 @ A3  
Applies to Lot 126 & 127



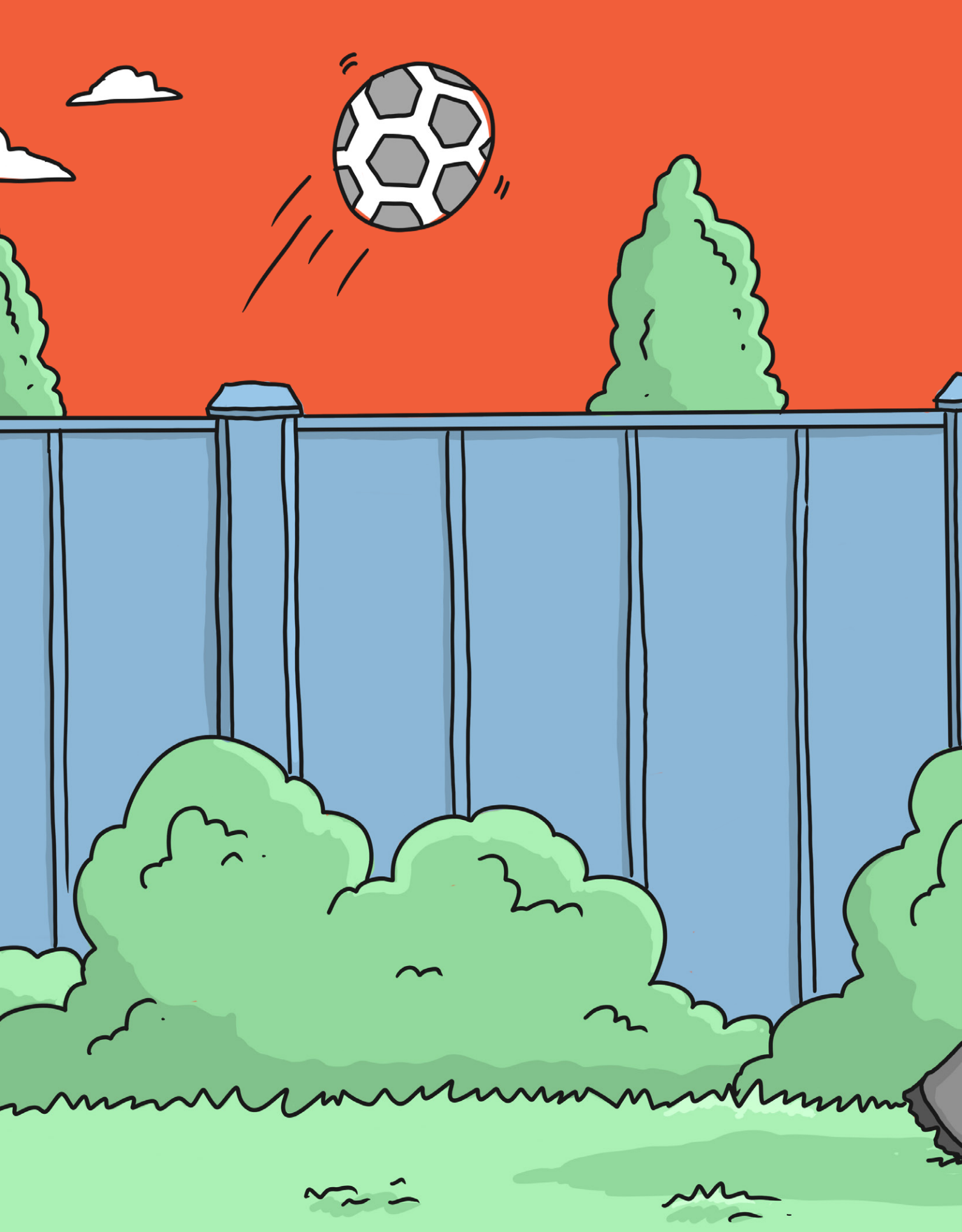
LINK RESERVE LOT BOUNDARY PLAN - SCALE 1:200 @ A3  
Applies to Lot 115-116 & 137-138



TYPICAL RESERVE BOUNDARY FENCING SECTION ELEVATION - SCALE 1:100 @ A3  
Note Elevation applies to Lot 115-116, 126-127 & 137-138







faringdon.co.nz  
info@faringdon.co.nz  
0800 667 849

PO Box 848  
Christchurch 8140  
New Zealand



**HUGHES**  
**DEVELOPMENTS**